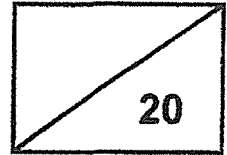


Ai Tong School
Primary 5 Science
2021 Term 1 Weighted Assessment



Name: _____ ()

Date: _____

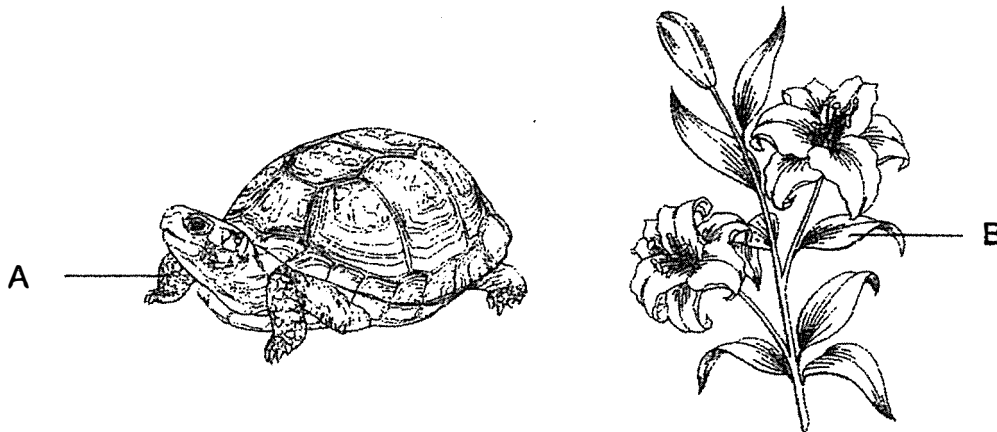
Class: P5 _____

Duration: 30 minutes

Section A (12 marks)

For each question from 1 to 6, four options are given. One of them is the correct answer. Make your choice (1, 2, 3 or 4) and write your answer in the bracket provided.

- 1 Cells are removed from parts A and B of two organisms as shown in the diagram below.



Which cell parts do the cells from A and B have in common?

- (1) nucleus, cell wall and cytoplasm
- (2) nucleus, chloroplast and cytoplasm
- (3) cell membrane, cytoplasm and nucleus
- (4) cell membrane, chloroplast and cell wall

()

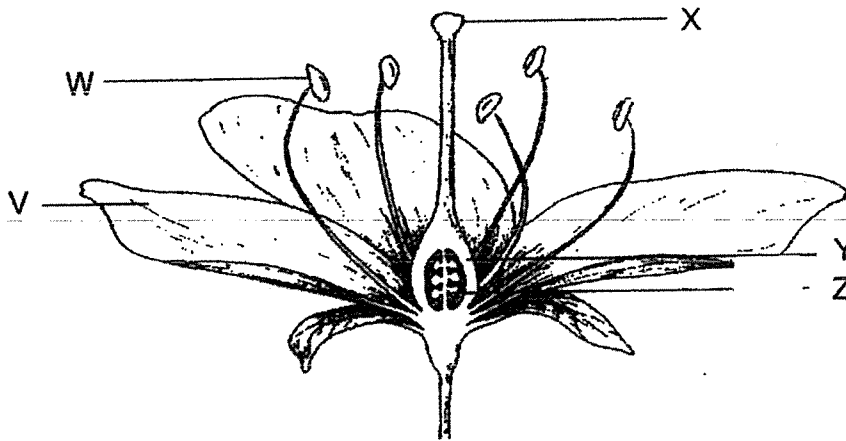
(Go on to the next page)

2 Which of the following shows the correct development of body systems in humans?

- (1) cells → organs → body system → tissues
- (2) cells → tissues → body system → organs
- (3) cells → tissues → organs → body system
- (4) cells → organs → tissues → body system

()

3 Josie removed some parts of a flower as shown below. A few weeks later, she observed that the flower still developed into a fruit.



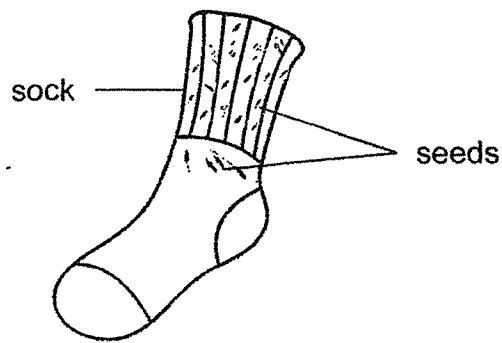
Which parts of the flower did Josie remove?

- (1) V and X only
- (2) V and W only
- (3) X and Z only
- (4) Y and Z only

()

(Go on to the next page)

- 4 The diagram below shows seeds that were stuck on the sock of a person who had walked through a forest.

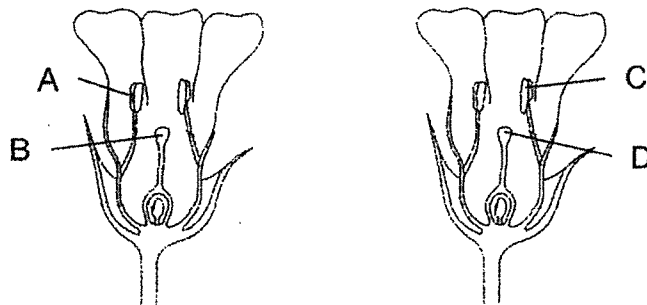


What characteristic does the seed have for its dispersal?

- (1) stiff hair
- (2) waterproof
- (3) fibrous husk
- (4) wing-like structure

()

- 5 The diagram below shows two flowers of the same type.



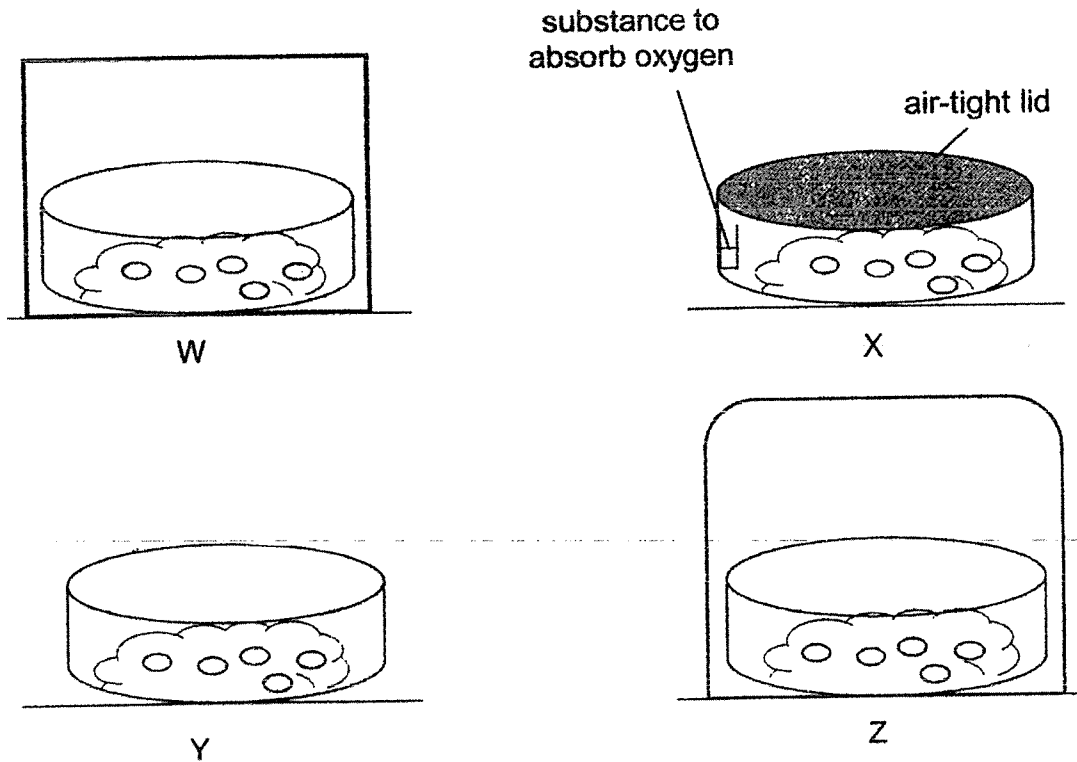
Pollination takes place when pollen grains are transferred from _____.

- (1) A to C and A to B
- (2) B to C and B to A
- (3) B to D and C to B
- (4) A to D and C to D

()

(Go on to the next page)

6 Lionel wanted to investigate the factors affecting germination of seeds. He prepared set-ups W, X, Y and Z as shown below. The seeds were placed on under different conditions and were watered daily.



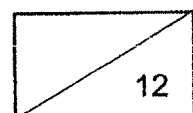
	Set-up W	Set-up X	Set-up Y	Set-up Z
Location	dark room	garden	garden	freezer

Which set-up(s) will the seeds germinate after three days?

- (1) Y only
- (2) W and Y only
- (3) X and Z only
- (4) X, Y and Z only

()

(Go on to the next page)

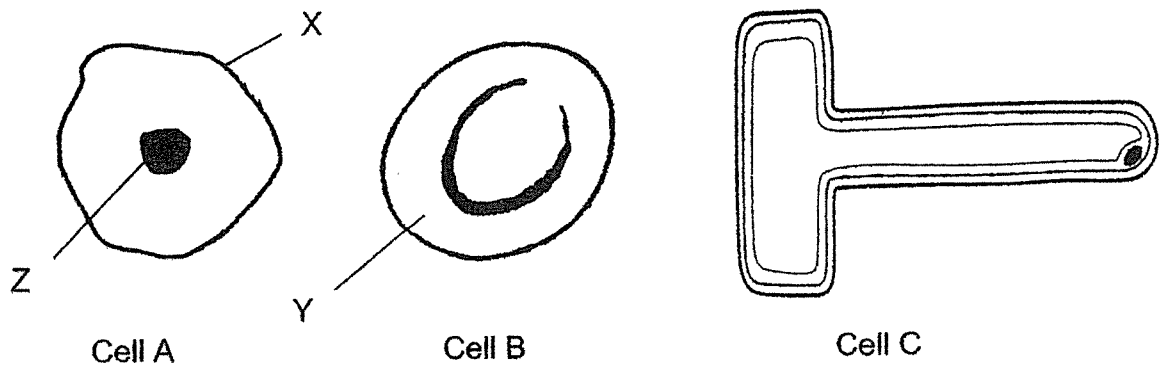


Section B (8 marks)

For questions 7 to 9, write your answers in the spaces provided.

The number of marks available is shown in bracket [] at the end of each question or part question.

7 The diagram below shows three cells, A, B and C with some parts labelled.



(a) For each statement below, fill in the blanks with true or false. [1]

Statement	True/False
Part X gives cell A a regular shape.	
Part Y is only found in animal cells and not plant cells.	

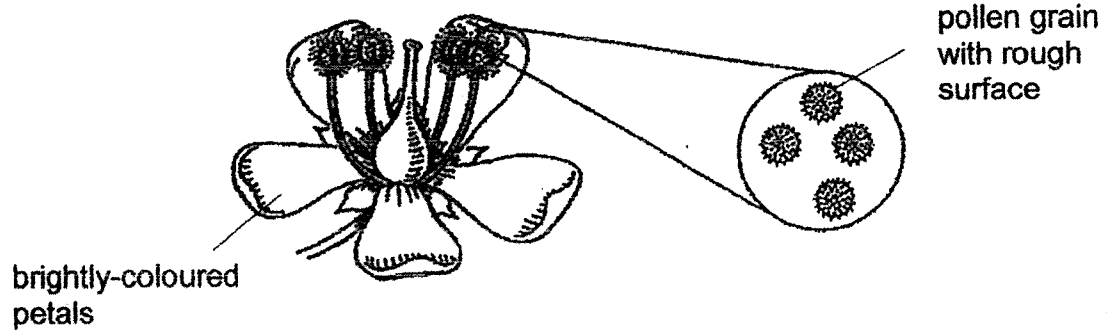
(b) State one function of part Z. [1]

Sam said that cell C can be found in the roots of a plant.

(c) Do you agree with Sam? Explain why. [1]

(Go on to the next page)

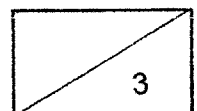
- 8 Alicia studied a flower as shown in the diagram below. She made notes on the flower's characteristics.



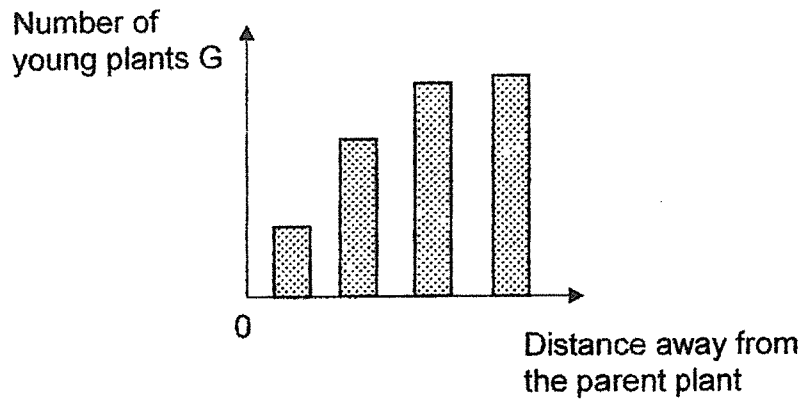
- (a) Based on the diagram above, how is the flower likely to be pollinated? [1]

- (b) Explain how both characteristics of the flower help it in pollination. [2]

(Go on to the next page)



- 9 Elden counted the number of young plants G at various distances from the parent plant in a garden. He plotted a graph as shown below.

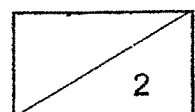


- (a) Which one of the following is likely to be the fruit of plant G? Put a tick (✓) in the box below. [1]



- (b) Based on the information given above, explain your answer in (a). [1]

END OF PAPER



ANSWER KEY



YEAR : 2021
LEVEL : PRIMARY 5
SCHOOL : AI TONG SCHOOL
SUBJECT : SCIENCE
TERM : WA1



BOOKLET A

Q1	3	Q2	3	Q3	2	Q4	1	Q5	4
Q6	2								

BOOKLET B

Q7	(a)	Statement	True/False
		Part X gives cell A a regular shape.	False
		Part Y is only found in animal cells and not plant cells.	False
<p>(b) It contains genetic information to pass on from one generation to the next generation.</p> <p>(c) Yes because cell C has a cell wall and it does not have chloroplast and root do not need chloroplast to make food</p>			
Q8	<p>(a) Animal pollinated</p> <p>(b) The petals are brightly-coloured to attract animals and insects the pollen grains have rough surfaces to stick onto the animal hair.</p>		
Q9	(a)	<div style="display: flex; justify-content: space-around; align-items: center;"> <div style="text-align: center;">  <input type="checkbox"/> </div> <div style="text-align: center;">  <input checked="" type="checkbox"/> </div> </div>	
<p>(b) The graph shows that the seeds are moving further from the parent plant because it has a feathery structure.</p>			

/

END