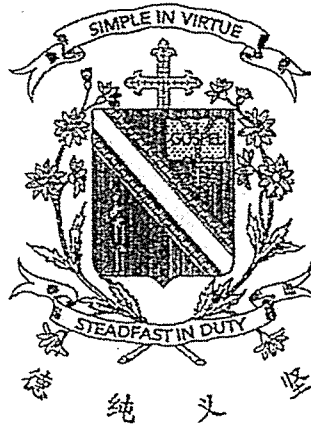


Name: \_\_\_\_\_ ( )

Class: Primary 3 \_\_\_\_\_

**. CHIJ ST NICHOLAS GIRLS' SCHOOL**

**Primary 3**  
**End-Year Assessment**  
**SCIENCE**

**BOOKLET A**

**29 October 2020**

Total Time for Booklets A and B: 1 hour 30 minutes

24 questions  
48 marks

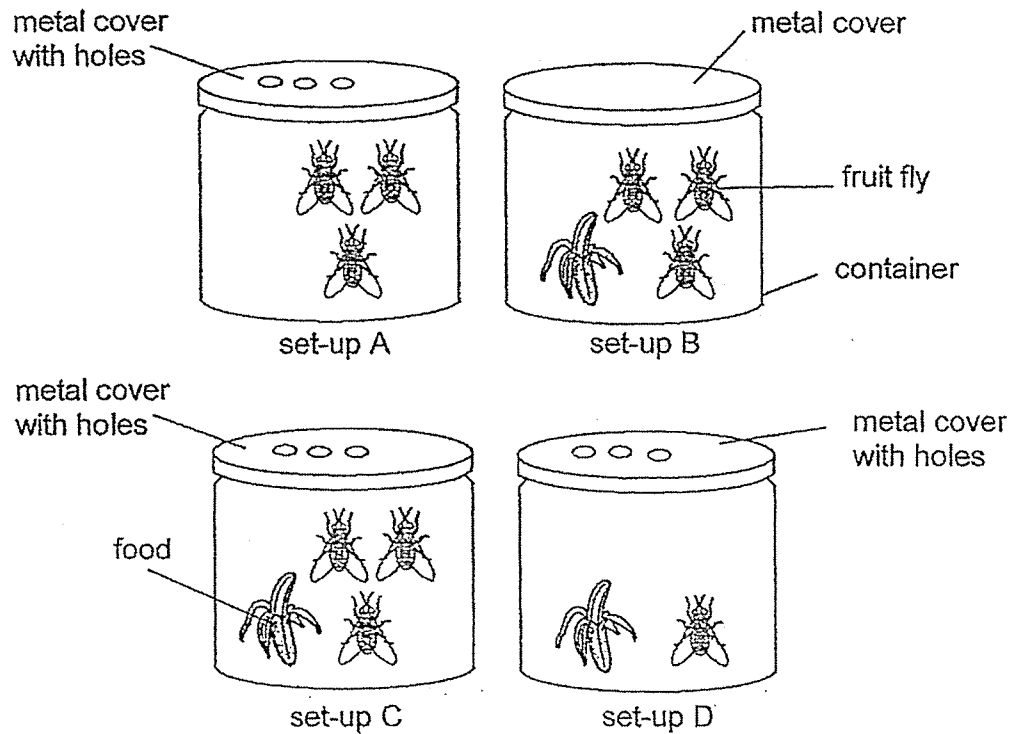
Do not open this booklet until you are told to do so.  
Follow all instructions carefully.  
Answer all questions.

*This booklet consists of 15 printed pages.*

**Section A (24 x 2 marks = 48 marks)**

For each question from 1 to 24, four options are given. One of them is the correct answer. Make your choice (1, 2, 3 or 4). Shade the correct oval (1, 2, 3 or 4) on the Optical Answer Sheet provided.

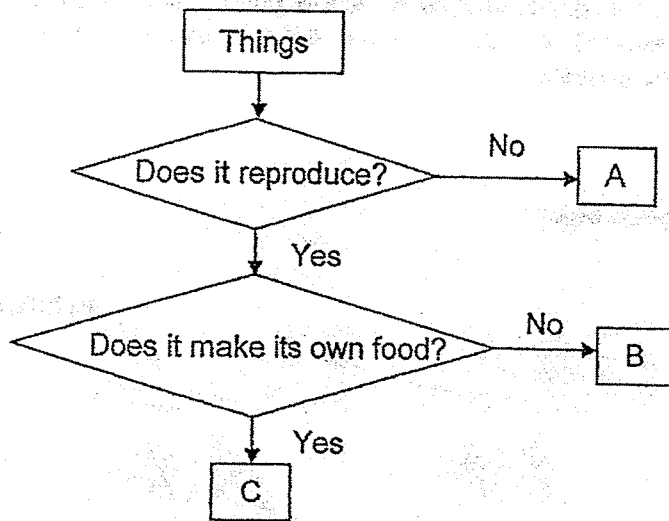
1. Study the diagram below.



Which two set-ups should Pete select if he wants to find out if living things need air to survive?

- (1) A and B
- (2) A and D
- (3) B and C
- (4) C and D

2. Study the flow chart below.



Based on the flow chart above, which of the following is best represented by letters A, B and C?

	A	B	C
(1)	tree	ball	dog
(2)	ball	plant	monkey
(3)	coin	cat	tree
(4)	monkey	coin	plant

3. Study the diagram below.



animal A

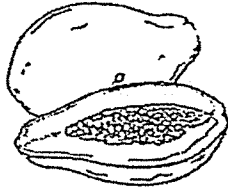
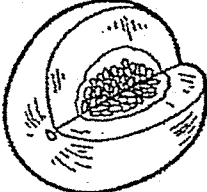

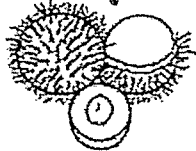


animal B

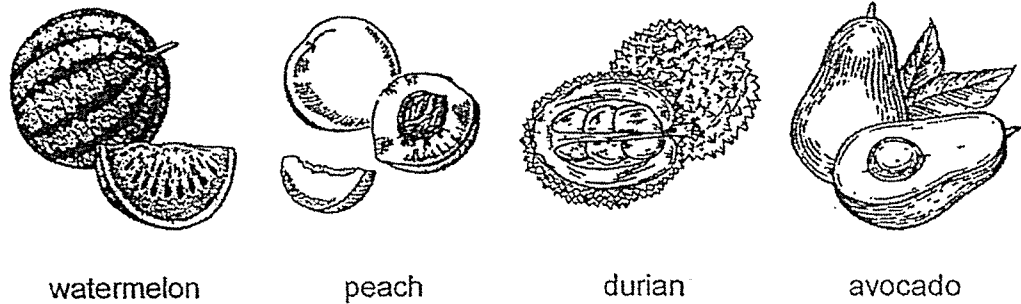
The animals are classified in the same group because both

- (1) lay eggs
- (2) have wings
- (3) have feathers
- (4) produce milk for their young

4. The diagram below shows how different fruits are classified.

Group A		Group B	
			
papaya	honey dew	longan	rambutan

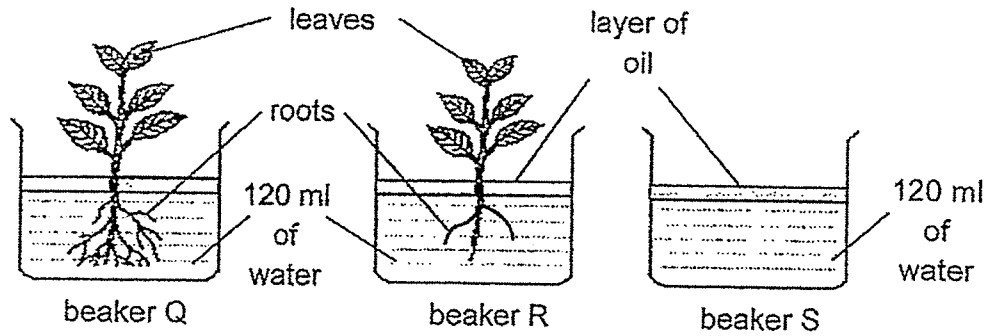
Irene wants to classify the following fruits into group A and B.



Which of the following shows the correct classification?

	Group A	Group B
(1)	avocado	watermelon
(2)	watermelon	durian
(3)	peach	avocado
(4)	durian	peach

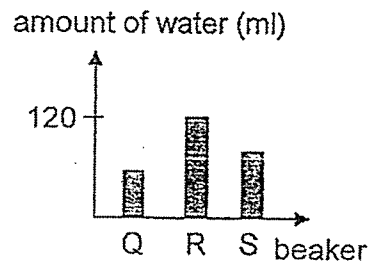
5. Ali carried out an experiment using two similar plants. He removed some roots from the plant in beaker R.



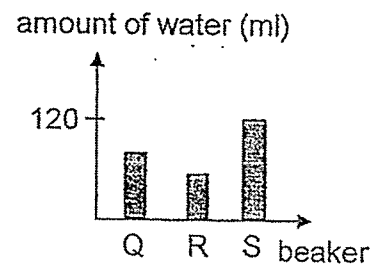
After three days, he measured the amount of water left in each beaker.

Which of the following graphs best represents the amount of water left in each beaker?

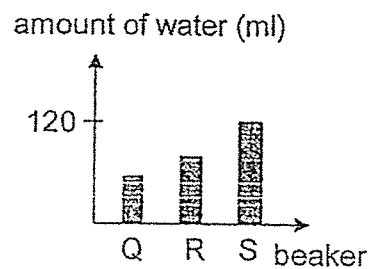
(1)



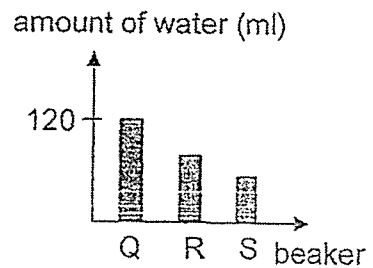
(2)



(3)



(4)



6. Study the table below.

Group Q	Group R
moss	tomato plant
ladder fern	water lily

Which of the following are suitable headings for group Q and R?

	Group Q	Group R
(1)	cannot make its own food	can make its own food
(2)	have weak stems	have strong stems
(3)	does not have leaves	have leaves
(4)	non-flowering plants	flowering plants

7. Which of the following statements about plants are true?

- A All plants produce flowers.
- B All plants need air, food and water.
- C Some plants do not reproduce by seeds.
- D Some plants have fruits that cannot be eaten.

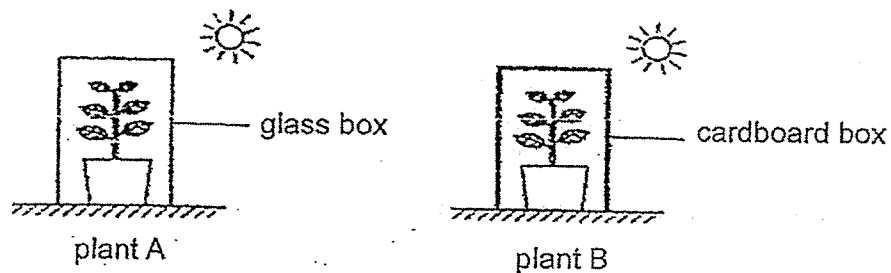
- (1) A and C only
- (2) A and D only
- (3) B and D only
- (4) B, C and D only

8. Which of the following statements correctly describes the function(s) of a stem?

- X Supports the plant.
- Y Holds the plant firmly to the soil.
- Z Allow taking in and giving out of gases.

- (1) X only
- (2) Z only
- (3) X and Y only
- (4) Y and Z only

9. Mary placed two similar plants A and B in boxes as shown below. She watered the plants daily with the same amount of water.



After a week, she observed that plant A was growing well while plant B had died.

Which one of the following statements best explains her observation?

- (1) Only plant B received water.
- (2) Plant A has more water than plant B.
- (3) Plant B has very little light to make food.
- (4) Only the plant A can get sunlight to make food.

10. Three pupils made some statements about fungi and bacteria.

All fungi and bacteria can only be seen under a microscope.

Tim

Both fungi and bacteria feed on living things, dead or alive.

Benny

All fungi are harmful to us.

Amy

Which of the pupil(s) made statements that is/are not true?

- (1) Amy only
- (2) Benny only
- (3) Amy and Tim only
- (4) Benny and Tim only

11. Meiling wanted to find out if the presence of water affects the growth of bread mould. The table below shows the variables in Meiling's experiment.

Variables	Set-up J	Set-up K
Type of bread	wholemeal bread	wholemeal bread
Amount of water added	0 ml	15ml
Location of set-up	dark cupboard	near the window
Duration of experiment	10 days	10 days

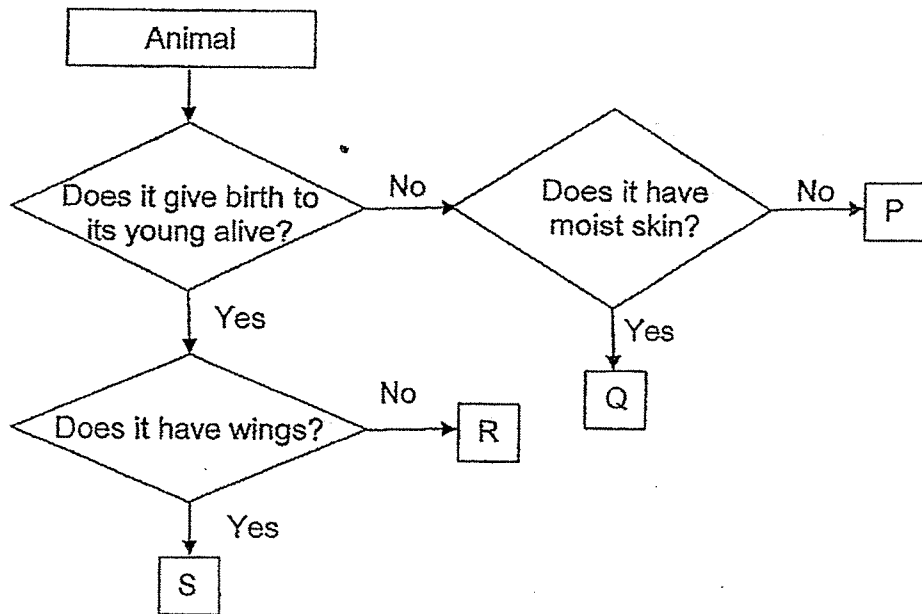
Her teacher told her that the experiment was not fair.

Which of the following variables is not correct in Meiling's experiment?

- (1) type of bread used
- (2) amount of light present
- (3) amount of water added
- (4) duration of experiment



12. Study the flow chart below.



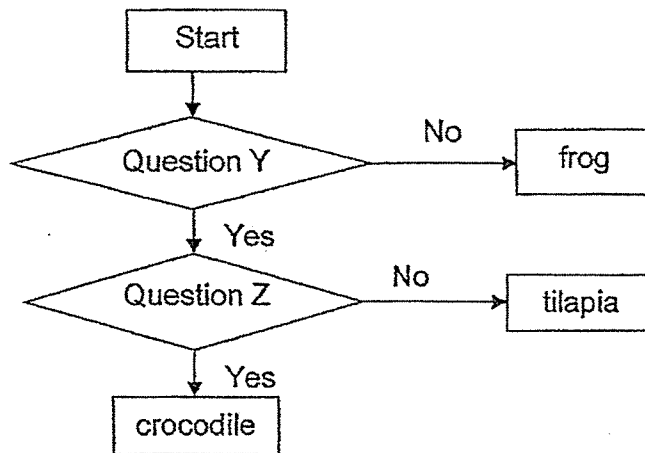
Based on the flow chart above, which letter P, Q, R or S best represents a salamander?

- (1) P
- (2) Q
- (3) R
- (4) S

13. What is generally common among birds and insects?

- (1) They have three body parts.
- (2) They reproduce by laying eggs.
- (3) They have the same number of legs.
- (4) They have the same type of body covering.

14. Study the flow chart below.



Based on the flow chart, which one of the following best represents questions Y and Z?

	Question Y	Question Z
(1)	Does it have legs?	Does it live on land?
(2)	Does it live on land?	Does it lay eggs?
(3)	Does it lay eggs?	Does it have scales?
(4)	Does it have scales?	Does it have legs?

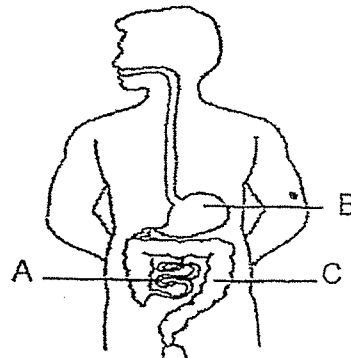
15. Study the diagram below.



Which is the function of the organ system shown above?

- (1) It supports the body.
- (2) It takes air into the body.
- (3) It helps different parts of the body to move.
- (4) It breaks down food into simple substances.

16. Study the organ system below.



Which of the following best describes what takes place at part A, B and C?

	A	B	C
(1)	digestion is completed here	water is absorbed from undigested food	digested food is absorbed into the blood
(2)	digested food is absorbed into the blood	food is broken down by digestive juices	water is absorbed from undigested food
(3)	water is absorbed from undigested food	digestion takes place	food is broken down by digestive juices
(4)	food is broken down by digestive juices	digested food is absorbed into the blood	water is absorbed from undigested food

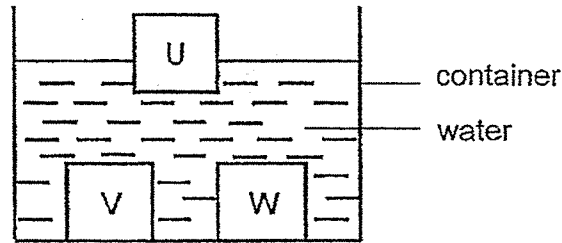
17. The diagram below shows a baby's milk bottle.



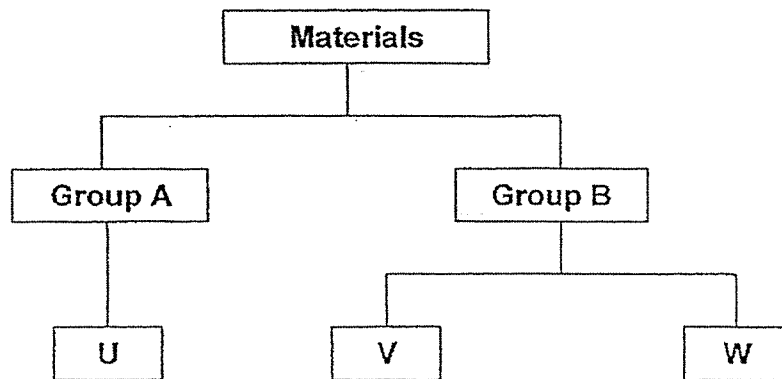
Compared to glass bottles, parents prefer to buy plastic milk bottles because plastic \_\_\_\_\_.

- (1) is flexible
- (2) is waterproof
- (3) does not break easily
- (4) allows light to pass through

18. Matthew placed three different materials U, V and W of similar shape and size into a container of water.



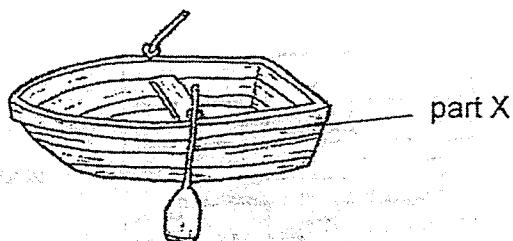
Based on his observation above, Matthew classified the materials into two groups A and B.



Which of the following are the correct headings for group A and B?

	Group A	Group B
(1)	floats on water	sinks in water
(2)	does not allow light to pass through	allows light to pass through
(3)	not strong	strong
(4)	stiff	flexible

19. The diagram below shows a boat.



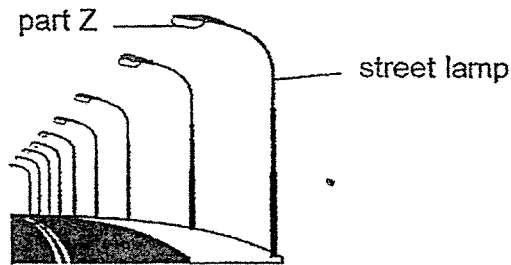
Study the properties of the four materials A, B, C and D shown below.

Material	Property of material	
	Can bend easily	Floats on water
A	Yes	Yes
B	No	No
C	Yes	No
D	No	Yes

Which material A, B, C or D is most suitable for making part X of the boat?

- (1) A
- (2) B
- (3) C
- (4) D

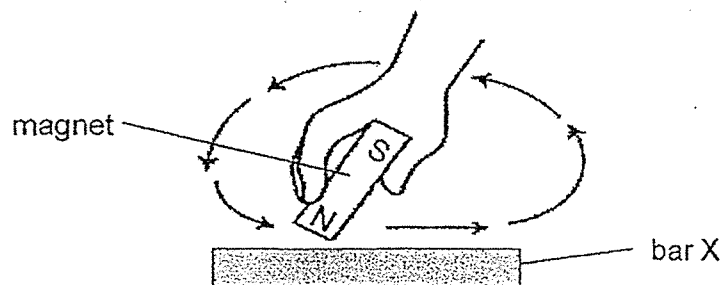
20. The diagram below shows a street lamp.



Which of the following shows the most suitable material and the most important property for making part Z?

	Material for part Z	Property of part Z
(1)	wood	strong
(2)	metal	waterproof
(3)	plastic	flexible
(4)	glass	allows light to pass through

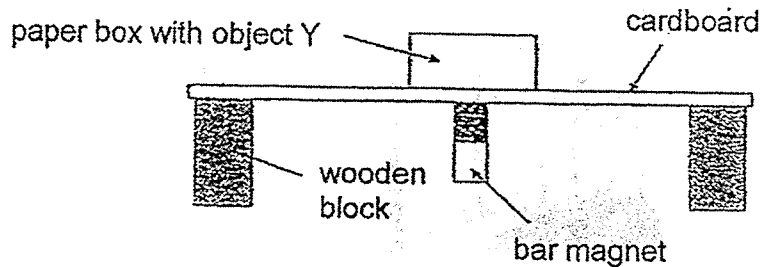
21. Samantha stroked bar X with one pole of a magnet a few times in the same direction as shown below. Then she placed bar X near some iron paper clips. She observed that bar X did not attract any iron paper clips.



Which of the following best explains her observation?

- (1) Bar X is made of a non-magnetic material.
- (2) She should stroke bar X in different directions.
- (3) The paper clips were made of non-magnetic materials.
- (4) She should stroke bar X with both poles of the magnet.

22. A paper box containing object Y was placed on a thin sheet of cardboard as shown below.

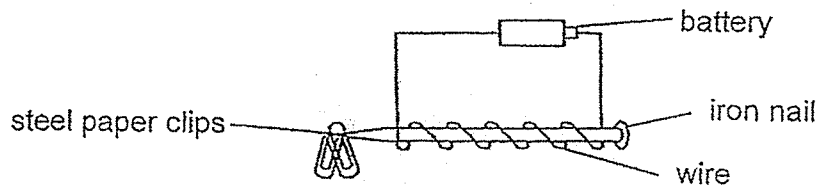


When the bar magnet moved, the box moved along with it in the same direction.

Which one of the following is most likely to be object Y?

- (1) iron pin
- (2) plastic ruler
- (3) cotton towel
- (4) glass marble

23. Helen coiled a wire around an iron nail as shown below. When the iron nail was placed near some steel paper clips, it attracted the paper clips.

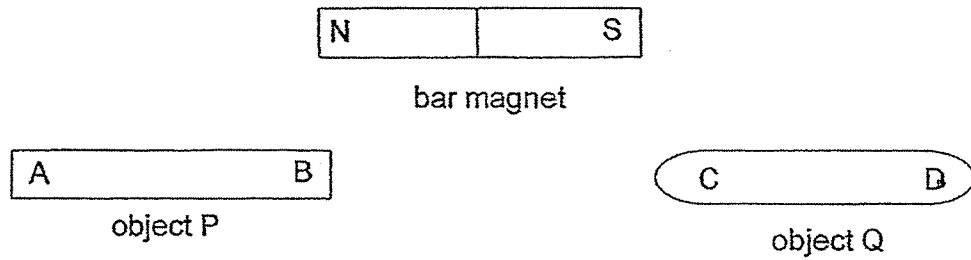


What should she do if she wants to attract more paper clips?

- A Add more batteries
- B Use a smaller iron nail.
- C Add more coils around the iron nail

- (1) A only
- (2) A and B only
- (3) A and C only
- (4) B and C only

24. Tina carried out an experiment with a bar magnet and two objects P and Q.



She placed the south pole of the magnet near side A of object P and then near side B. She repeated the experiment with object Q and recorded her observations.

Which of the following observations would show that only object P is a magnet?

	A	B	C	D
(1)	attract	attract	repel	repel
(2)	attract	repel	repel	attract
(3)	repel	attract	attract	attract
(4)	repel	repel	attract	repel

END OF BOOKLET A



Name: \_\_\_\_\_ ( )

Class : Primary 3 \_\_\_\_\_

## CHIJ ST NICHOLAS GIRLS' SCHOOL



### Primary 3 End-Year Assessment 2020 SCIENCE

#### BOOKLET B

29 October 2020

Total Time for Booklets A and B: 1 hour 30 minutes

10 questions  
32 marks

Do not open this booklet until you are told to do so  
Follow all instructions carefully.  
Answer all questions.

This paper consists of 10 printed pages.

Booklet A	48
Booklet B	32
Total	80

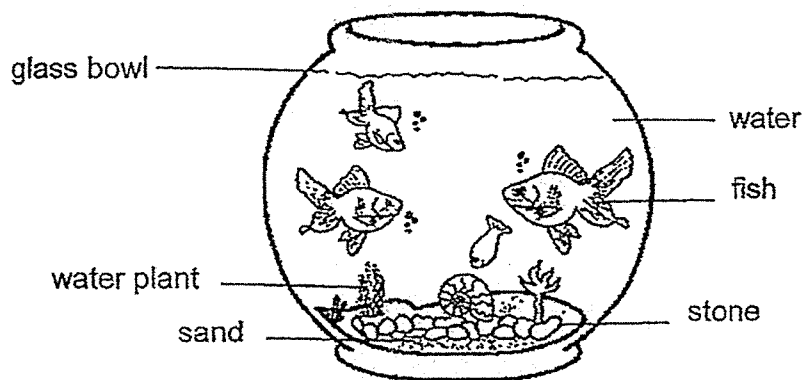
\_\_\_\_\_  
Parent's Signature/Date

**Section B (32 marks)**

For questions 25 to 34, write your answers in this booklet.

The number of marks available is shown in the brackets at the end of each question or part question.

25. Study the diagram below.



John classified the things in the fish bowl into two groups P and Q.

Group P	Group Q
stone	fish
sand	water plant

(a) Write suitable headings for Group P and Q. [1]

Group P: \_\_\_\_\_ Group Q: \_\_\_\_\_

(b) In which group P or Q should John place the glass bowl? Give a reason for your answer. [1]

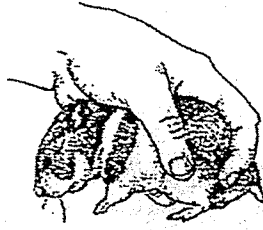
---



---

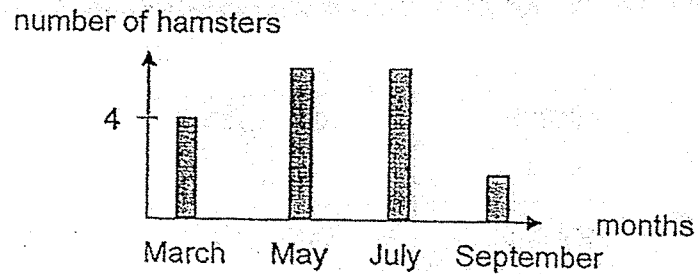


26. Sally tried to pick up her pet hamster as shown below. It jumped out of her hand as she picked it up.



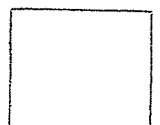
- (a) State one characteristic of living things that is shown by the hamster. [1]
- 

Sally kept four hamsters in a cage and provided them with food and water daily. She did not add or remove any hamsters from the cage. She recorded her observations in the graph below.

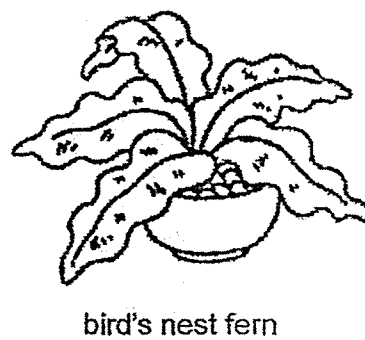
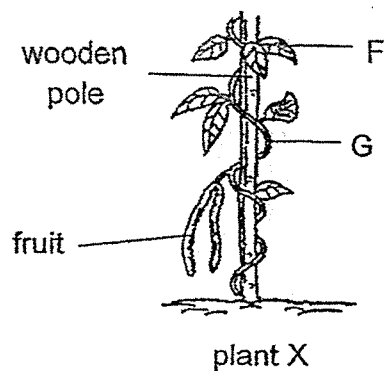


- (b) Based on the graph above, describe the changes in the number of hamsters from July to September. [1]
- 

- (c) Give a reason for your answer in (b). [1]
- 
- 



27. The diagram below shows plant X and a bird's nest fern.



(a) Identify plant parts F and G. [1]

F: \_\_\_\_\_ G: \_\_\_\_\_

(b) Explain how the wooden pole helps plant X. [1]

---

---

---

(c) State a difference between the bird's nest fern and plant X in terms of their plant parts. [1]

---

---



28. Andy conducted an experiment to find out if plants need sunlight to make food in order to grow. He watered four plants A, B, C and D daily. The table below shows the height of the plants after two weeks.

Plant	Number of hours in the sun each day	Height of plant at the start of the experiment (cm)	Height of plant at the end of two weeks (cm)
A	3	6	9
B	6	5	12
C	9	9	15
D	0	8	0

- (a) Based on the table, which plant A, B, C or D grew the most in the two weeks?

[1]

---



---

- (b) Explain why plant D's height was 0 cm at the end of two weeks.

[1]

---



---

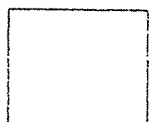


---

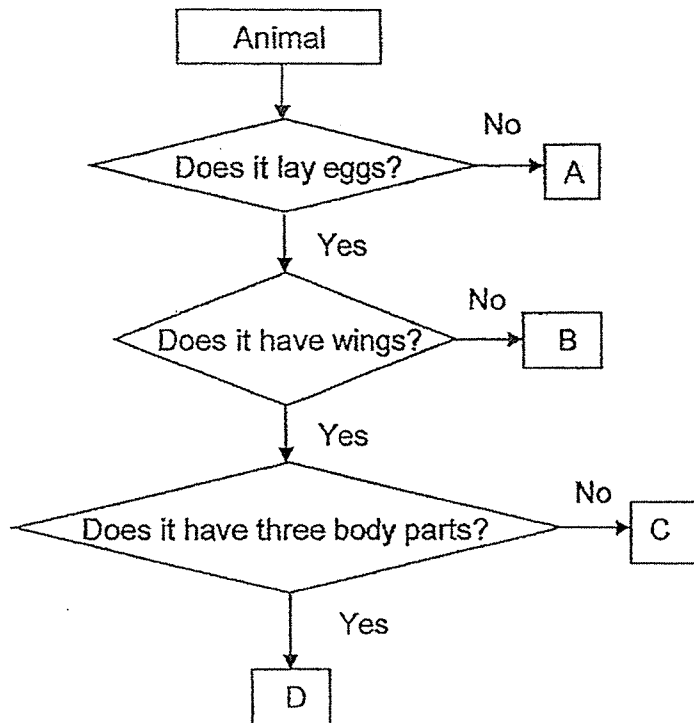
- (c) For Andy's experiment to be fair, tick (✓) the variables that should be kept the same.

[1]

Variables	Tick (✓)
type of plant used	
amount of water given daily	
amount of sunlight given daily	



29. Study the flow chart below.



(a) Based on the flow chart, state a similarity between animal B and C. [1]

---

---

(b) Based on the flow chart above, match the animals below with the correct letters A, B, C and D in the blanks provided. Write each letter once only. [2]

Grasshopper: \_\_\_\_\_

Bat: \_\_\_\_\_

Turtle: \_\_\_\_\_

Penguin: \_\_\_\_\_



30. Eric discovered animal Y in a forest. He recorded his observations of the animal below.

- has a tail
- produces milk for its young

(a) Which animal group does Y belong to? [1]

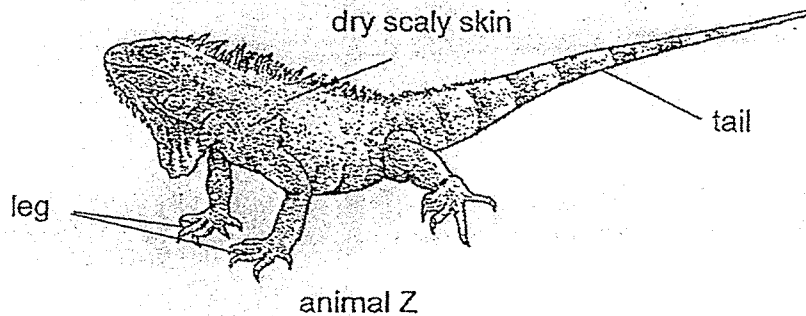
---

(b) Based on your answer in (a), write down another characteristic of animal Y. [1]

---

---

Eric saw another animal Z in the forest. He said that animal Z belonged to the same animal group as animal Y because it also had a tail.

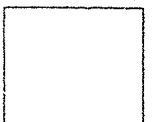


(c) Do you agree with Eric? Explain your answer. [1]

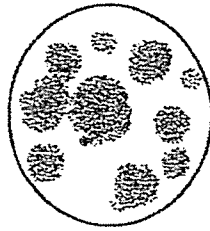
---

---

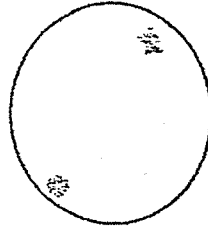
---



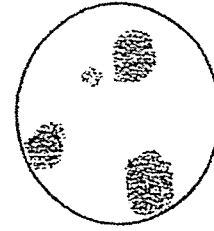
31. Marcus conducted an experiment to find out the conditions bacteria need in order to grow. He recorded his observations in the diagram below.



In a classroom



In a refrigerator

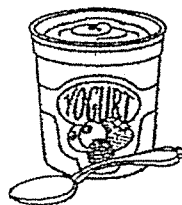


In an air-conditioned room

(a) Based on his observations above, tick (✓) in the table below to indicate whether the statements are true, false or not possible to tell. [2]

		True	False	Not possible to tell
i	Bacteria grow best in cold places.			
ii	Bacteria grow better in dark than bright places.			
iii	Bacteria can only grow in warm conditions.			
iv	Bacteria grow best in warm places.			

The diagram below shows a cup of yoghurt.



(b) Marcus told his brother that he should not eat the cup of yoghurt as it contains bacteria and may cause him to feel unwell. Do you agree with Marcus? [1]

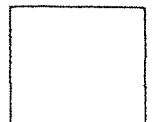
---



---

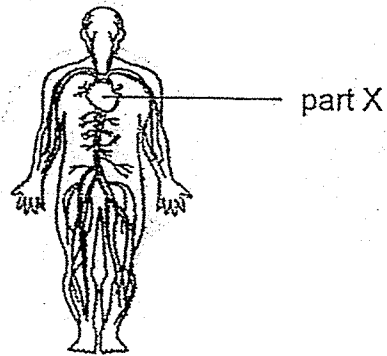


---





32. The diagram below shows a human organ system.



(a) Name the organ system shown in the diagram above. [1]

\_\_\_\_\_

(b) Name part X of the organ system shown above. [1]

\_\_\_\_\_

(c) State two functions of the human organ system shown above. [2]

Function 1: \_\_\_\_\_

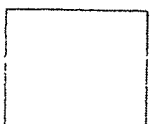
\_\_\_\_\_

\_\_\_\_\_

Function 2: \_\_\_\_\_

\_\_\_\_\_

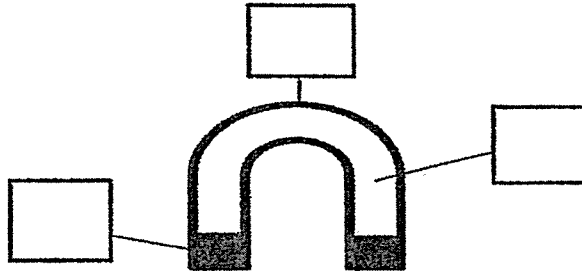
\_\_\_\_\_



33. Bella placed some pins near a U-shaped magnet. She then recorded the number of pins attracted to different parts of the magnet in the table below.

Position	Number of pins attracted
K	1
L	3
M	14

- (a) Based on the table above, label positions K, L and M in the boxes below. [1]



- (b) What can Bella conclude from this experiment? [1]

---

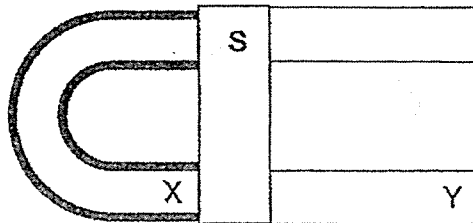


---

- (c) State a material that the pins could be made of. [1]

---

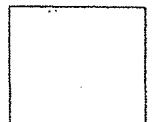
The diagram below is made up of a U-shaped magnet and three bar magnets.



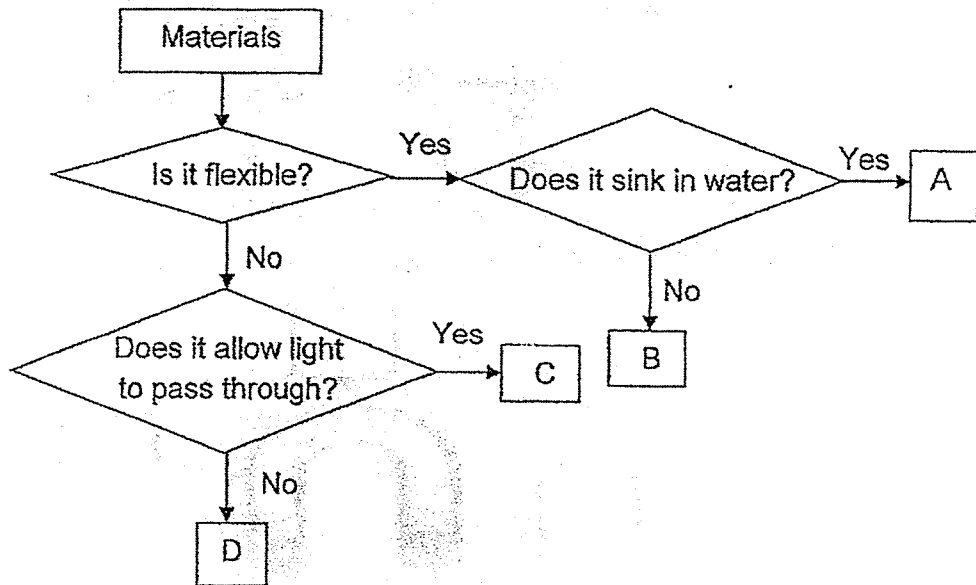
- (d) State the magnetic poles of X and Y. [1]

X: \_\_\_\_\_

Y: \_\_\_\_\_



34. Study the flow chart below.



(a) Based on the flow chart, state one similarity and one difference between material A and B. [2]

Similarity:

---



---

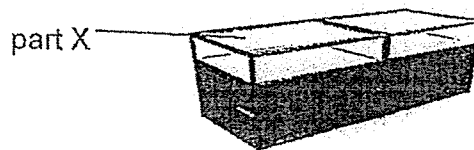
Difference:

---



---

The diagram below shows a display counter at a watch shop.



(b) Based on the flow chart, which material A, B, C or D is most suitable for making part X of a display case? Explain your answer. [2]

---



---



---

END OF BOOKLET B



YEAR : 2020  
 LEVEL : PRIMARY 3  
 SCHOOL : CHIJ ST NICHOLAS GIRLS' SCHOOL  
 SUBJECT : SCIENCE  
 TERM : EOY

Q1	3	Q2	3	Q3	2	Q4	4	Q5	3
Q6	4	Q7	4	Q8	1	Q9	4	Q10	3
Q11	2	Q12	2	Q13	2	Q14	4	Q15	1
Q16	2	Q17	3	Q18	1	Q19	4	Q20	4
Q21	1	Q22	1	Q23	3	Q24	3		

Q25	(a)Group P: Non-living things      Group Q: Living things (b)Group P. Glass bowl is a non-living thing
Q26	(a)Living things respond to changes (b)It decreases (c)Some hamsters died
Q27	F: leaves                                  G: stem (b)The wooden pole helps to support the plant to hold the leaves up to get sunlight to make more food. (c)The bird's nest fern does not have flowers while plant X does.
Q28	(a)Plant B grew the most (b)Plant D died as there was no sunlight so it could not make food. (c)type of plant used, amount of water given daily
Q29	(a)Both animal lay eggs (b)D A B C
Q30	(a)Mammals (b)It give birth to young alive (c)No, because it lays eggs and also has dry scaly skin.
Q31	(a)(i)False (ii)Not possible to tell (iii)False (iv)True (b)No. The yogurt contains useful bacteria and will not cause him to feel unwell.

Q32	<p>(a)Circulatory system  (b)Heart  (c)Function 1:Transports all the digested food through out the body.  Function 2: It helps to bring nutrients to all parts of the body.</p>
Q33	<p>(a)M , K , L  (b)The poles of the magnet has the most magnetic strength.  (c)iron  (d)X:South  Y:North</p>
Q34	<p>(a)Similarity: Both materials are flexible  Difference: A sinks in water while B floats.  (b)C. C allows light to pass through. Part  X needs light to pass through so people can see the watches.</p>