



MARKS	
Sect A:	/ 10
Sect B:	/ 10
Total :	/ 20

Name : _____ ()

Class : Primary 3 _____

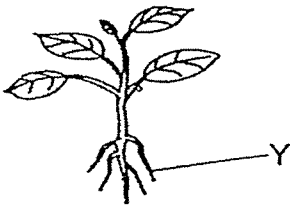
Date : _____

Answer all questions.

Section A: (5 x 2 marks = 10 marks)

For each question from 1 to 5, four options are given. One of them is the correct answer. Make your choice (1, 2, 3 or 4) and write your answer in the brackets provided.

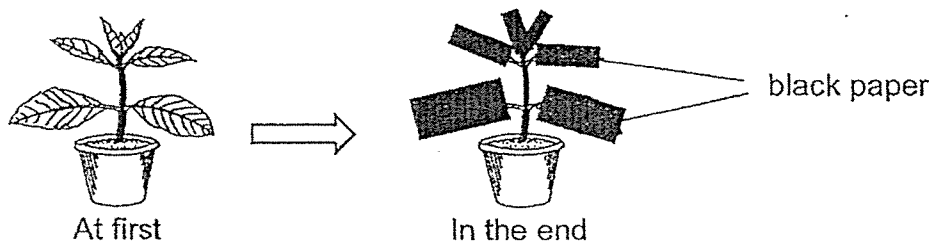
- 1 The diagram below shows a plant.



What is the function of part Y of this plant?

- (1) to bear fruits for the plant
- (2) to make food for the plant
- (3) to take in and give out gases for the plant
- (4) to take in water and mineral salts for the plant ()

- 2 Black paper was used to completely cover all the leaves of a potted plant as shown below.

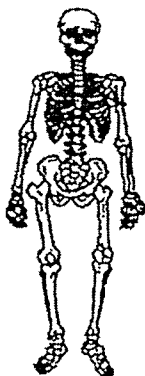


After covering the leaves, the leaves will not be able to _____.

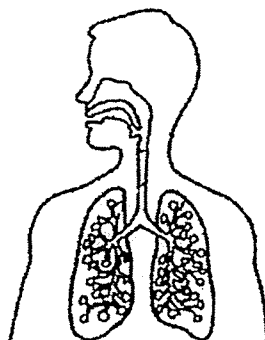
- (1) make food
- (2) absorb water
- (3) hold the plant upright
- (4) transport mineral salts to other plant parts ()

3 Identify the two organ systems, A and B, as shown below.

System A



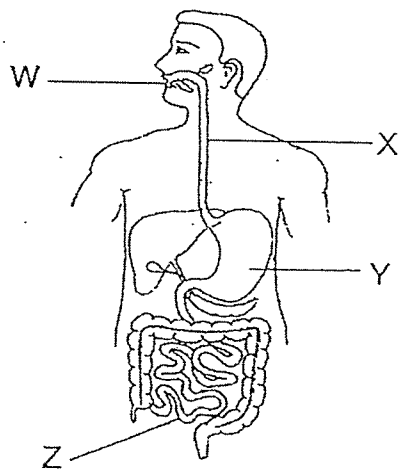
System B



	System A	System B
(1)	Muscular	Circulatory
(2)	Muscular	Respiratory
(3)	Skeletal	Circulatory
(4)	Skeletal	Respiratory

()

4 Four organs in a human body are labelled W, X, Y and Z below.



In which of these labelled organs does digestion take place?

- (1) X and Y only
- (2) Y and Z only
- (3) W, Y and Z only
- (4) W, X, Y and Z

()

5 The table below shows the function of four organ systems.

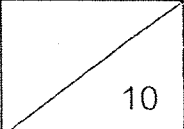
Body System	Function
Skeletal	Protects the organs in the body
Muscular	Helps different parts of the body to move
Circulatory	Supports and gives the body its shape
Respiratory	Takes in and removes air for the body

Which of the following organ systems is **wrongly** matched to its function?

- (1) Skeletal
- (2) Muscular
- (3) Circulatory
- (4) Respiratory

()

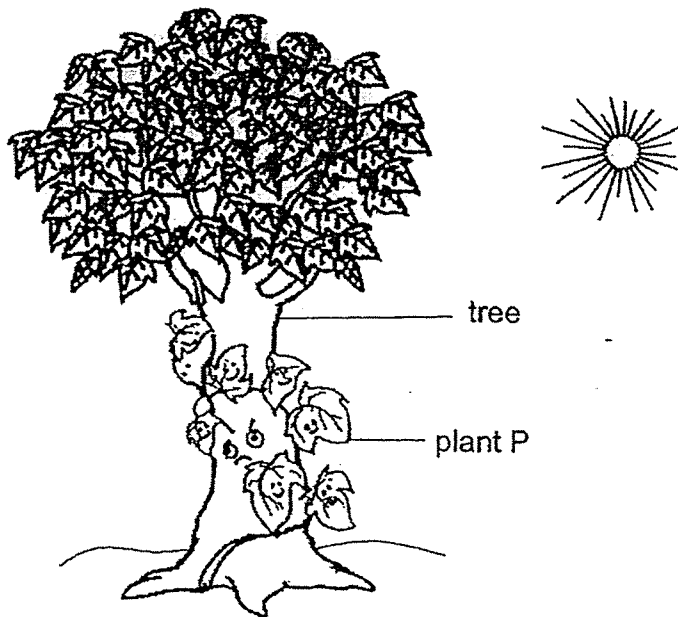
Total marks for section A

Score	
-------	---

Section B: Structured questions (10 marks)

For each question from 6 to 8, write your answers in the space provided. The number of marks available is shown in brackets [] at the end of each question or part question.

6 The diagram below shows plant P and a tree.



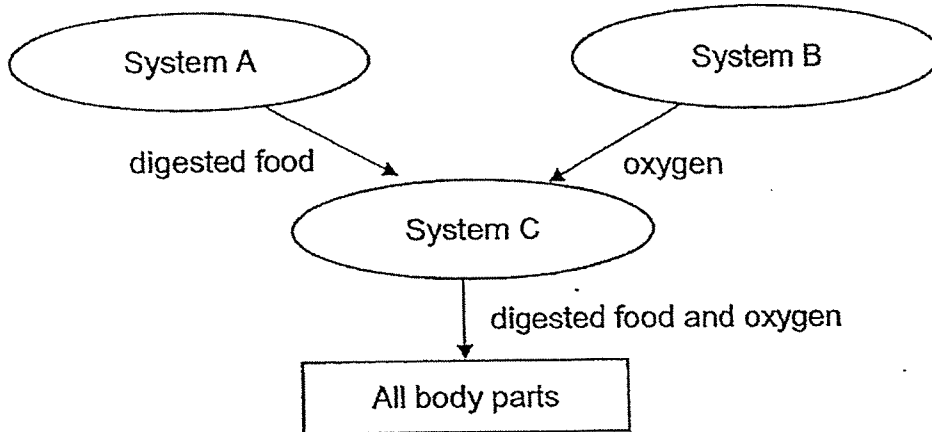
(a) Which part of the tree holds it firmly to the ground? [1]

(b) Plant P coils around the tree and grows upwards. Based on this observation, state a difference between the stem of plant P and the stem of the tree. [1]

(c) Plant P's stem coils around the tree for support. How does this help plant P? [1]

Score	
	3

- 7 The diagram below shows how 3 organ systems, A, B and C, work together. System C receives digested food from system A and oxygen from system B. All parts of the body receive digested food and oxygen from system C.

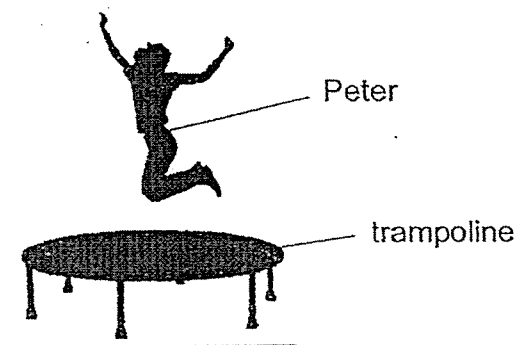


(a) Fill in the blanks below.

(i) System B is the _____ system. [1]

(ii) An organ that can be found in System A is the _____ [1]

- (b) The diagram below shows Peter jumping on a trampoline for fifteen minutes. He had his lunch before doing this activity. This activity needs Peter to bend and flex his muscles.

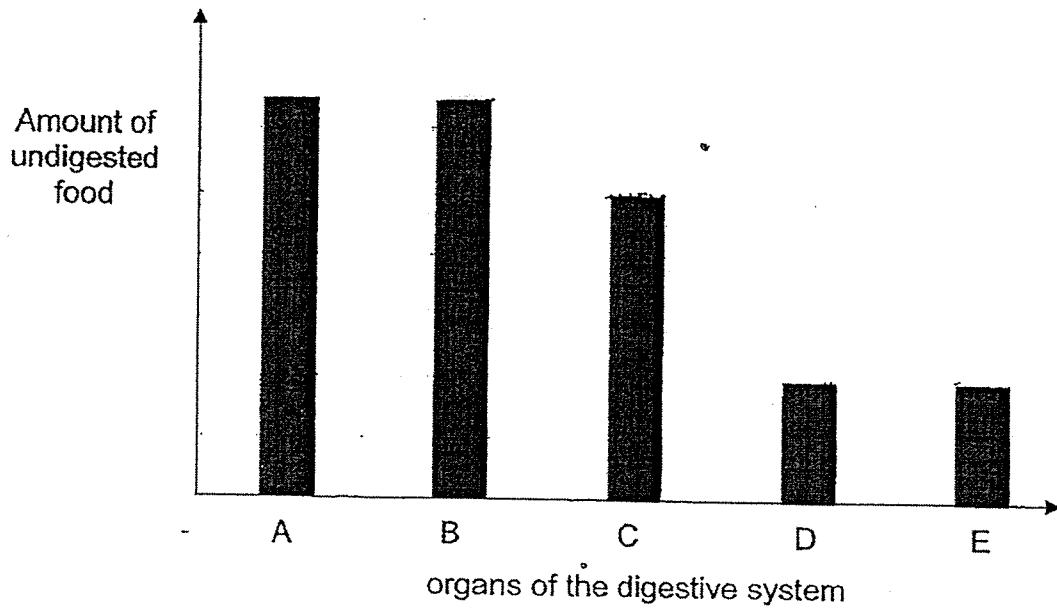


The two statements below describe how Peter's organ systems are involved in the above activity. Write "True" or "False" beside each of the statements. [1]

Statements	True / False
(i) Peter does not use his skeletal system in this activity.	
(ii) After jumping for 15 minutes, Peter started breathing deeply as his respiratory system needed to take in more air.	

Score	3
-------	---

- 8 The bar graph below shows the amount of undigested food as it leaves each organ in the order A → B → C → D → E of the human digestive system.



- (a) Fill in the blanks below with A, B, C, D or E. [1]

In which organ does digestion end? _____

- (b) What is the function of organ E? [1]

- (c) Explain how chewing of food helps in digestion. [2]

End of paper

6

Score	4
-------	---

ANSWER KEY

YEAR: 2020

LEVEL: PRIMARY 3

SCHOOL: NAN HUA PRIMARY SCHOOL

SUBJECT: SCIENCE

TERM: CA2

BOOKLET A

Q1	4	Q2	1	Q3	4	Q4	3	Q5	3
----	---	----	---	----	---	----	---	----	---

BOOKLET B

Q6	<p>a) The roots of the tree .</p> <p>b) Plant P has a weak stem while the tree has a strong stem.</p> <p>c) The coiling around the stem hold the leaves up to spread out to get more sunlight to make more food.</p>
Q7	<p>ai) Respiratory</p> <p>aii) Gullet</p> <p>bi) False</p> <p>bii) True</p>
Q8	<p>a) D</p> <p>b) E absorbs water from undigested food that passes through it.</p> <p>c) Chewing breaks down food into smaller pieces so that more digestive juices can come into contact with the food to digest the food more easily.</p>