

**Tao Nan School**  
**Primary 4 Science**  
**2024 Weighted Assessment 1**

<b>Section A</b>	<div></div> 10
<b>Section B</b>	<div></div> 10
<b>Total</b>	<div></div> 20

**Name:** \_\_\_\_\_ (     )     **Date:** \_\_\_\_\_

**Class:** \_\_\_\_\_     **Parent's signature:** \_\_\_\_\_

**Section A (5 x 2 marks)**

For each question from 1 to 5, four options are given. One of them is the correct answer. Make your choice (1, 2, 3 or 4) and write it in the brackets provided.

(10 marks)

\_\_\_\_\_

1.     What is the main function of the roots of a plant?
- (1) Keep the plant upright

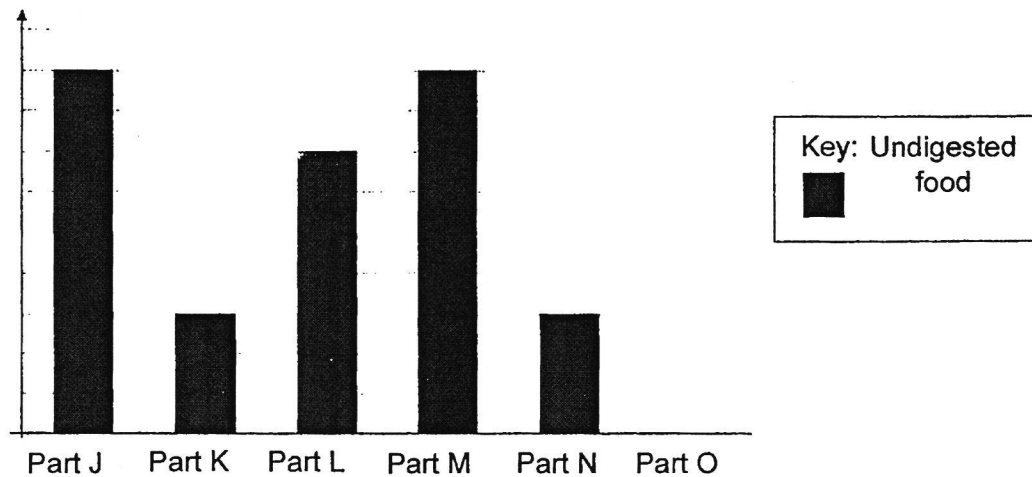
(2) Make food for the plant

(3) Transport food and water

(4) Absorb water and mineral salts from the soil
- (     )

2. Sam ate a plate of chicken rice for lunch. The graph below shows the amount of undigested food leaving the different parts of the digestive system after several hours.

Amount of undigested food leaving each part (g)

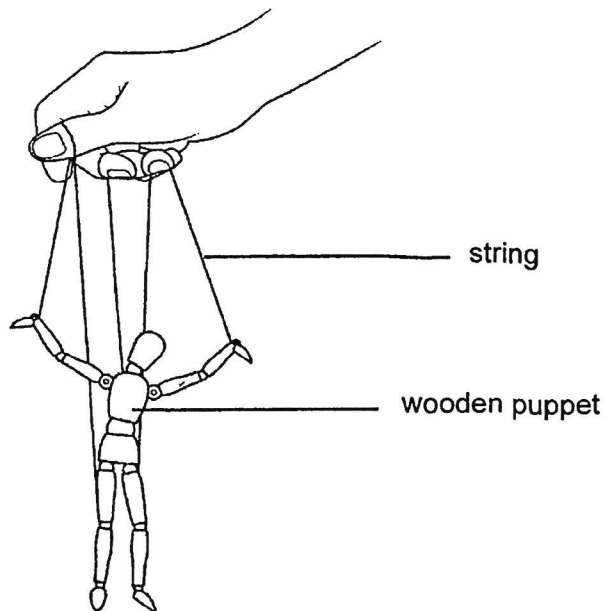


Which of the following parts is likely to be the stomach?

- (1) Part J
- (2) Part K
- (3) Part L
- (4) Part O

( )

3. Henry made a wooden puppet as shown below.

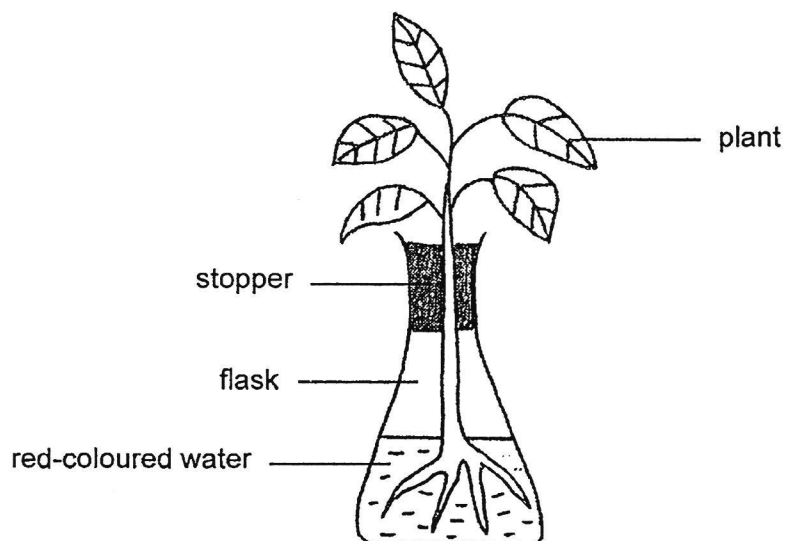


The wooden puppet moves when Henry pulls the strings. Which of the following human systems do the puppet and strings represent?

	Wooden Puppet	Strings
(1)	Muscular System	Circulatory System
(2)	Skeletal System	Circulatory System
(3)	Skeletal System	Muscular System
(4)	Muscular System	Skeletal System

(      )

4. Mei Ling placed three similar plants, A, B and C into a flask of red-coloured water each. One of the set-ups is shown in the diagram below.



The table below shows the differences between the three plants. A tick (✓) shows the presence of water-carrying tubes or food-carrying tubes.

Parts of plants	Plants		
	A	B	C
Water-carrying tubes		✓	✓
Food-carrying tubes	✓	✓	

In which plant(s), A, B or C, would the leaves turn red after several days?

- (1) C only
- (2) A and B only
- (3) B and C only
- (4) A, B and C

(      )

5. Which of the following shows the correct sequence in which food travels through the parts in the digestive system?

(1) mouth → stomach → small intestine → large intestine

(2) gullet → small intestine → stomach → large intestine

(3) mouth → gullet → stomach → large intestine → small intestine

(4) mouth → gullet → stomach → small intestine → large intestine

(     )

End of Section A

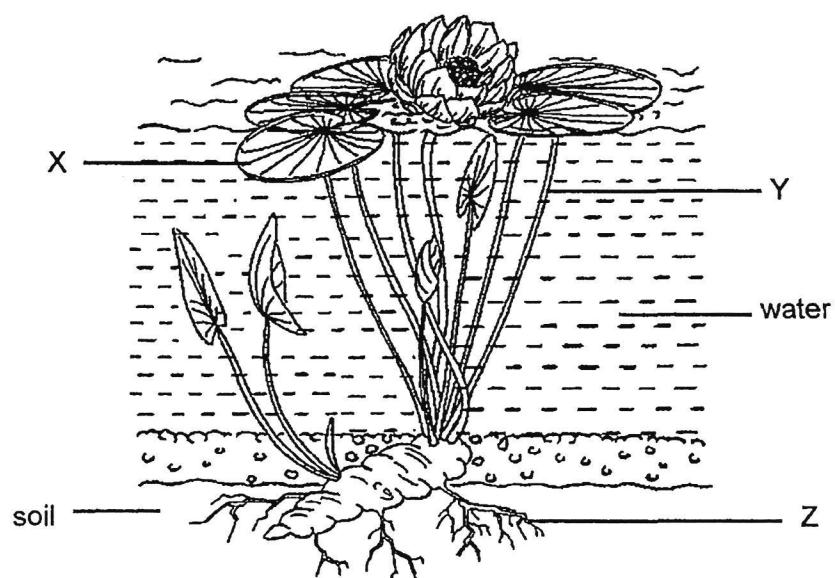
**Section B (10 marks)**

For questions 6 to 9, write your answers clearly.

The number of marks available is shown in brackets [ ] at the end of each question or part question.

(10 marks)

6. The diagram below shows a water plant.



(a) Label parts Y and Z.

[1]

Y: \_\_\_\_\_

Z: \_\_\_\_\_

(b) What is the function of part X?

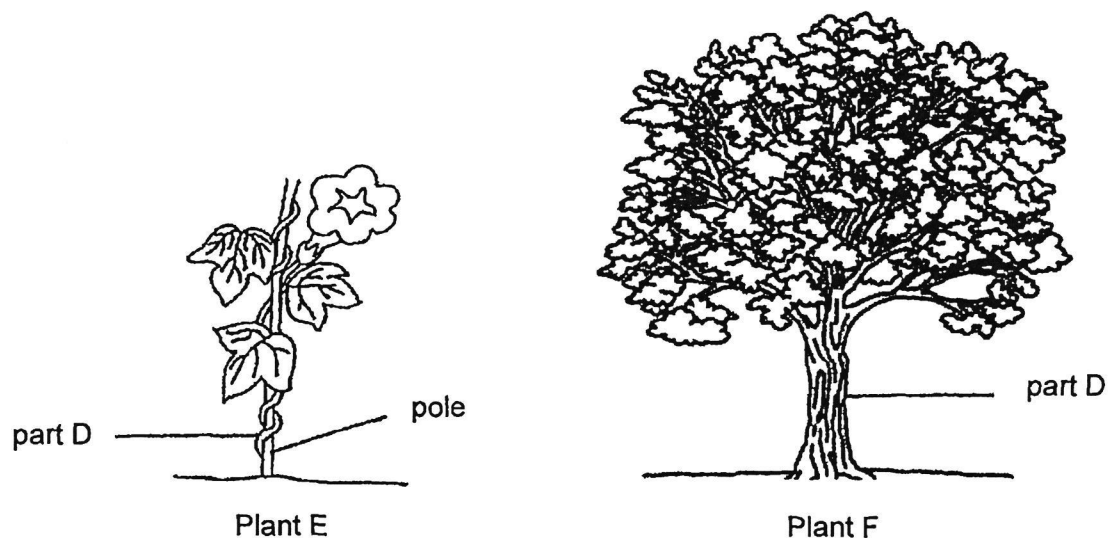
[1]

\_\_\_\_\_

\_\_\_\_\_

Score	2
-------	---

7. The diagram below shows two different plants, Plants E and F.



(a) Compare part D of Plants E and F.

[1]

---

---

(b) Explain how the pole helps Plant E to survive.

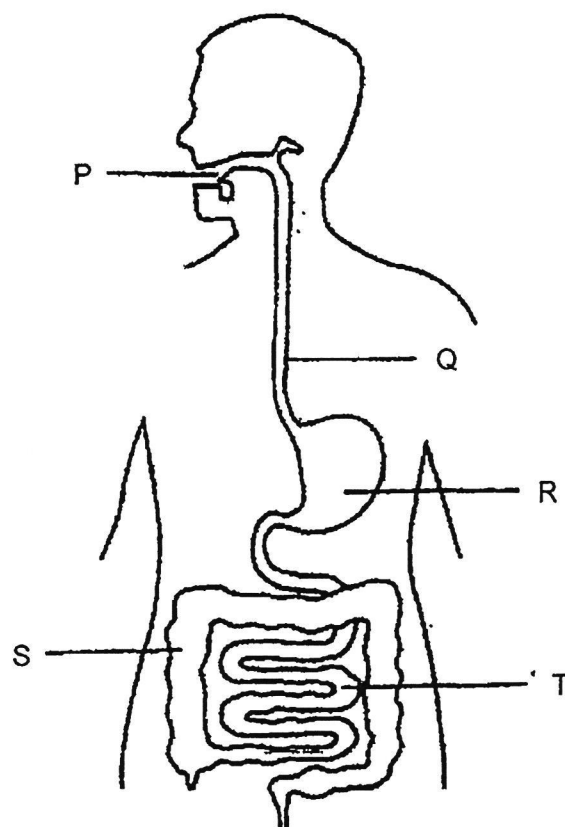
[1]

---

---

Score	2
-------	---

8. The diagram below shows the human digestive system.



(a) State all the part(s) where digestion take(s) place. [1]

---

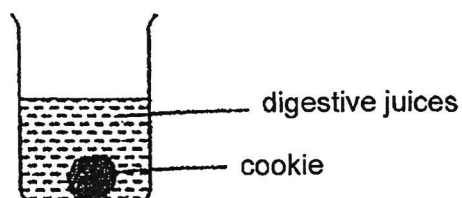
(b) State the two functions of part T. [2]

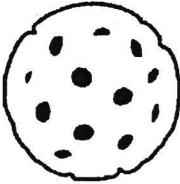
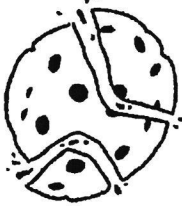

---

---



9. Sarah wanted to find out if the surface area of food affects the time taken for the food to be digested. There are four set-ups as shown below. In each set-up, she placed a cookie in 20ml of digestive juices as shown below.



	L	M	N
<b>Set-ups</b>			
<b>Mass of cookie (g)</b>	10	10	5

(a) Based on the table provided, which two set-ups should she use to ensure a fair test? [1]

\_\_\_\_\_

(b) Which cookie in the set-ups mentioned in (a) would take a shorter time to be digested? Explain your answer. [2]

\_\_\_\_\_  
 \_\_\_\_\_  
 \_\_\_\_\_  
 \_\_\_\_\_

**End of Paper**

Score	3
-------	---

SCHOOL : TAO NAN SCHOOL  
LEVEL : PRIMARY 4  
SUBJECT : SCIENCE  
TERM : 2024 WA1

CONTACT :

Q1)	4
Q2)	3
Q3)	3
Q4)	3
Q5)	4
Q6)	a)Y: stem Z:roots b)Part X function is to absorb sunlight to make food by photosynthesis for the plant.
Q7)	a) Plant E has a weak stem while plant C has a woody stem b) The pole helps plant E absorb more sunlight cause the plant curls up the pole.
Q8)	a) P, R and T b) Part T absorb digested food in the bloods team.
Q9)	a) She should use set-up L and M. b) M would take a shorter time to be digested, because when the piece of cookie is smaller, the surface area in contact with digestive juices is larger, when the surface area is larger it will be digested faster.