



Nan Hua Primary School  
Primary 4 Mathematics  
Term 2 Weighted Assessment 2024

Name: \_\_\_\_\_ (       )

Class: Primary 4M \_\_\_\_\_

Date: \_\_\_\_\_

Duration: 40 min

Marks	
Section A:	/8
Section B:	/8
Section C:	/9
Total:	25

---

**INSTRUCTIONS TO CANDIDATES**

1. Write your name and index number in the space provided.
2. Do not turn over the page until you are told to do so.
3. Follow all instructions carefully.
4. Answer all questions.
5. Use dark blue or black ball point pen to write your answers in the space provided for each question.
6. Do not use correction tape/ fluid/ highlighter.

*This booklet consists of 9 printed pages and 1 blank page.*

**Section A**

Questions 1 to 4 carry 1 mark each. Questions 5 to 6 carry 2 marks each.  
For each question, four options are given. One of them is the correct answer.  
Make your choice (1, 2, 3 or 4) and write your answer in the brackets.

(8 marks)

1

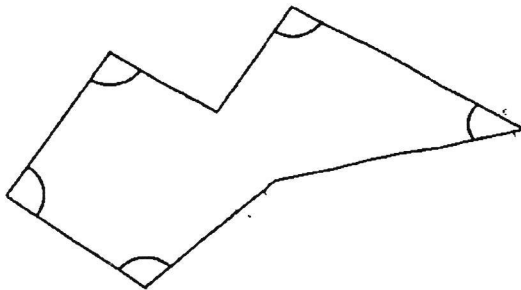
$$8\frac{5}{9} = \frac{\boxed{\phantom{000}}}{9}$$

What is the missing number in the box?

- (1) 13
- (2) 22
- (3) 72
- (4) 77

( )

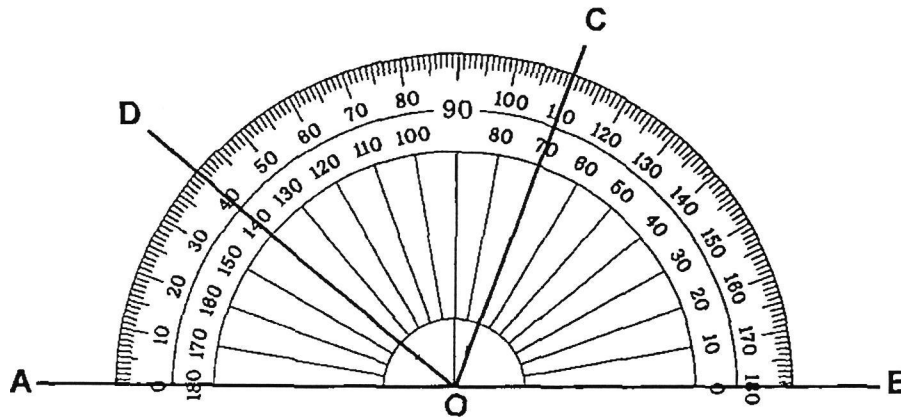
2 In the following figure, how many of the marked angles are obtuse?



- (1) 1
- (2) 2
- (3) 3
- (4) 4

( )

3 Measure  $\angle AOC$ .



- (1)  $40^\circ$
- (2)  $70^\circ$
- (3)  $110^\circ$
- (4)  $140^\circ$

( )

4 In the letters below, how many letters have more than 2 right angles?

MATH IS FUN

- (1) 1
- (2) 2
- (3) 3
- (4) 6

( )

- 5 Arrange the following fractions in increasing order.

$$\frac{19}{6}$$

$$3\frac{6}{7}$$

$$\frac{29}{9}$$

(1)  $3\frac{6}{7}$ ,  $\frac{29}{9}$ ,  $\frac{19}{6}$

(2)  $3\frac{6}{7}$ ,  $\frac{19}{6}$ ,  $\frac{29}{9}$

(3)  $\frac{19}{6}$ ,  $\frac{29}{9}$ ,  $3\frac{6}{7}$

(4)  $\frac{29}{9}$ ,  $\frac{19}{6}$ ,  $3\frac{6}{7}$

( )

- 6 The table below shows the number of Primary 4 students who can swim in a primary school. There are equal number of students in 4A, 4B and 4C. Which of the following shows the correct data for (a) and (b)?

	4A	4B	4C
Number of students who can swim	28	16	(b)
Number of students who cannot swim	8	(a)	14

- |     |     |     |
|-----|-----|-----|
|     | (a) | (b) |
| (1) | 6   | 12  |
| (2) | 20  | 22  |
| (3) | 20  | 44  |
| (4) | 22  | 44  |

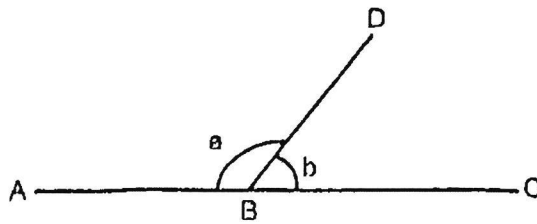
( )

**Section B**

Questions 7 to 10 carry 2 marks each. Write your answers in the spaces provided.  
For questions which require units, give your answers in the units stated

(8 marks)

- 7 What are two other ways of naming  $\angle b$ ?

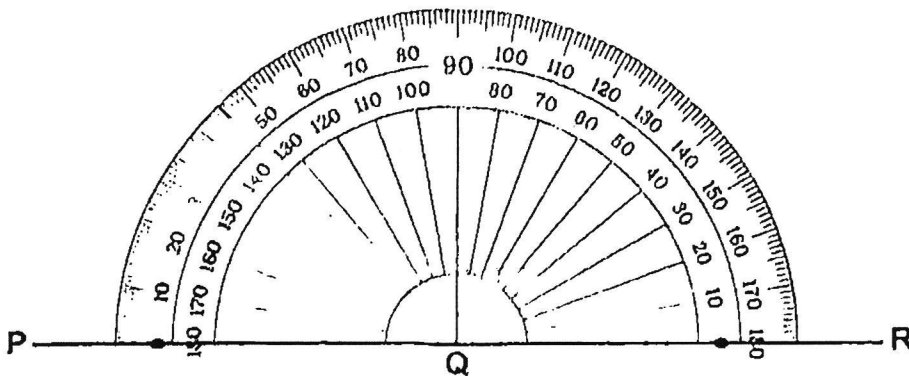


Ans : (i)  $\angle$  \_\_\_\_\_

(ii)  $\angle$  \_\_\_\_\_

- 8 Draw the angle with the given line. Mark and label the angle.

$$\angle RQS = 135^\circ$$



Please do not write in the margin

☐
☐

- 9 Express  $\frac{74}{8}$  as a mixed number in its simplest form.

Ans: \_\_\_\_\_

- 10 What is the missing number in the box?

$$\frac{6}{9} = \frac{\boxed{\phantom{000}}}{15}$$

Ans: \_\_\_\_\_

Please do not write in the margin.

**Section C**

For questions 11 to 13, show your working clearly and write your answers in the spaces provided. The number of marks available is shown in brackets [ ] at the end of each question or part-question. (9 marks)

11 Peter had 48 apples.

He used  $\frac{2}{3}$  of them to bake a pie and  $\frac{1}{6}$  of them to make apple juice.

(a) How many apples did he use?

Ans: (a) \_\_\_\_\_ [2]

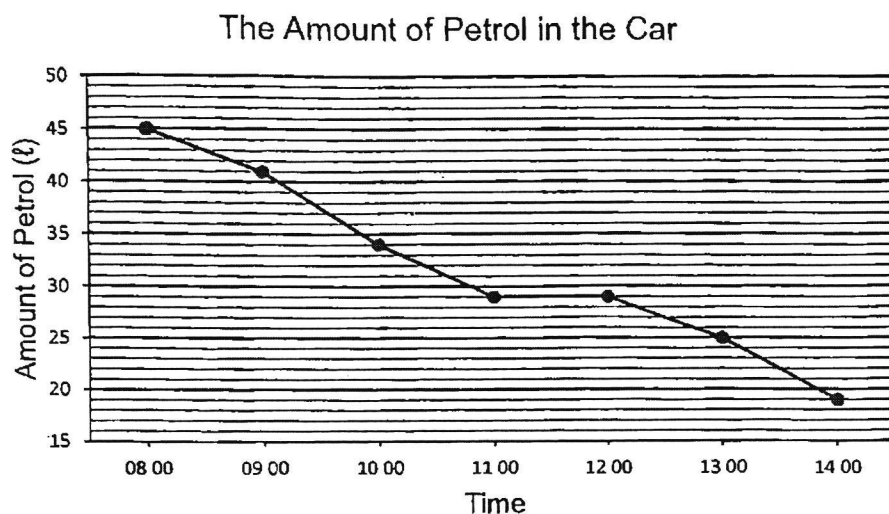
(b) How many apples were left?

Ans: (b) \_\_\_\_\_ [1]

Please do not write in the margin.



- 12 A car was filled with 45 ℓ of petrol. The car started travelling from 08 00 to 14 00. Petrol was used when the car was moving. The line graph shows the amount of petrol in the car from 08 00 to 14 00.



(a) How much petrol was used from 09 00 to 11 00?

Ans: (a) \_\_\_\_\_ [2]

(b) At which 1-hour period was the car not moving?

Ans: (b) \_\_\_\_\_ to \_\_\_\_\_ [1]

Please do not write in the margin.





13

John used  $\frac{3}{10}$  kg of sugar to bake a cake.

He used  $\frac{1}{4}$  kg of sugar less to make a jelly than to bake the cake.

He had  $\frac{1}{4}$  kg of sugar left.

(a) How much sugar did he use for the jelly and the cake altogether?

Ans: (a) \_\_\_\_\_ [2]

(b) How much sugar did he have at first?

Ans: (b) \_\_\_\_\_ [1]

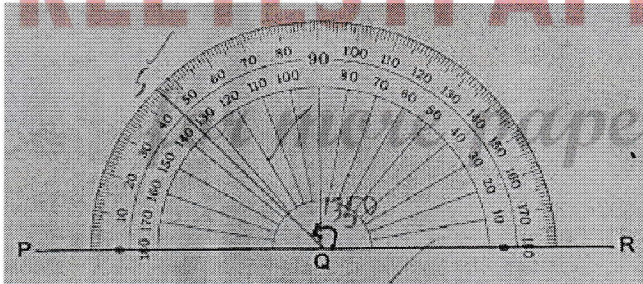
Please do not write in the margin.



End of Paper

SCHOOL : NAN HUA SCHOOL  
 LEVEL : PRIMARY 4  
 SUBJECT : MATH WA2  
 TERM : 2024 WA3

CONTACT :

Q1)	4
Q2)	3
Q3)	3
Q4)	2
Q5)	3
Q6)	2
Q7)	i) DBC ii) CBD
Q8)	
Q9)	$9\frac{1}{4}$
Q10)	10
Q11)	a) $48 \div 6 = 8$ $8 \times 5 = 40$ b) $48 - 40 = 8$
Q12)	a) $41 - 29 = 12L$ b) 11 00 to 12 00
Q13)	a) $\frac{1}{20} + \frac{3}{10} = \frac{1}{20} + \frac{6}{20} = \frac{7}{20} kg$ b) $\frac{7}{20} + \frac{1}{4} = \frac{7}{20} + \frac{5}{20} = \frac{12}{20}$ $\frac{3}{5} kg$