



# Rulang Primary School

## MINI-TEST 1 SCIENCE 2024

Name: \_\_\_\_\_ (   )

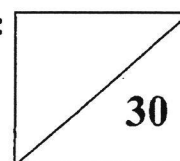
Level: Primary 3

Total Time: 45 minutes

Class: Primary 3 (   )

Date: 8 May 2024

Total Marks:



### Instructions to pupils:

1. Do not open this booklet until you are told to do so.
2. You are required to answer **all** the questions in this booklet.
3. This question booklet consists of **12** printed pages, including the cover page.

**Section A (10 x 2 marks)**

**For each of the questions from 1 to 8, four options are given. One of them is the correct answer. Shade the correct oval (1, 2, 3 or 4) on the Optical Answer Sheet.**

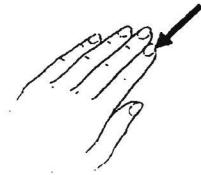
1. Study the table below carefully.

|   | Move from place<br>to place | Can reproduce | Need air, food<br>and water to<br>survive |
|---|-----------------------------|---------------|---|
| X | ✓                           |               |   |
| Y |                             | ✓             | ✓   |
| Z | ✓                           | ✓             | ✓   |

Which of the letters is/are likely to be a living thing(s)?

- (1) X only
- (2) Z only
- (3) X and Y only
- (4) Y and Z only

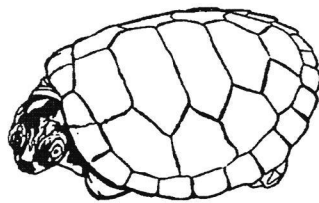
2. Which of the following is not an example of living things responding to changes around them?



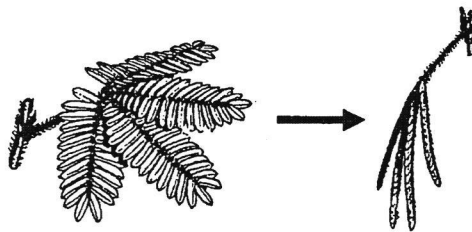
- (1) A person's fingernails growing longer.



- (2) A boy covering his ears when he hears loud music.

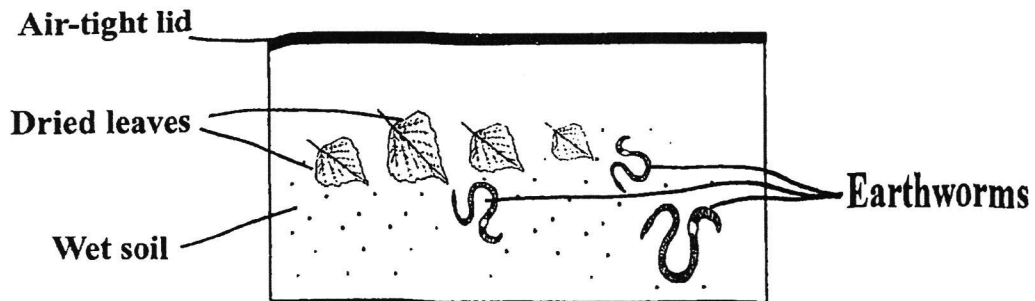


- (3) A tortoise hiding itself in its shell when it senses danger.



- (4) A mimosa plant closing its leaves when it is touched.

3. Patrick put some earthworms in a tank of wet soil. He placed some dried leaves in the tank to feed the earthworms. He also covered the tank with an air-tight lid.



What can Patrick do so that the earthworms can survive longer?

- (1) Use another lid with holes.
  - (2) Add more dry soil into the tank.
  - (3) Remove the leaves from the tank.
  - (4) Place the tank under the sunlight.
4. Linda observed the characteristics of four living things, P, Q, R and S, and recorded them in the table below.

| Characteristics       | P | Q | R | S |
|-----------------------|---|---|---|---|
| Can bear flowers      | x | x | ✓ | x |
| Reproduce by spores   | ✓ | ✓ | x | ✓ |
| Can grow in the dark  | x | ✓ | x | ✓ |
| Can make its own food | ✓ | ✓ | ✓ | x |

Which of the following living things is a fungus?

- (1) P
- (2) Q
- (3) R
- (4) S

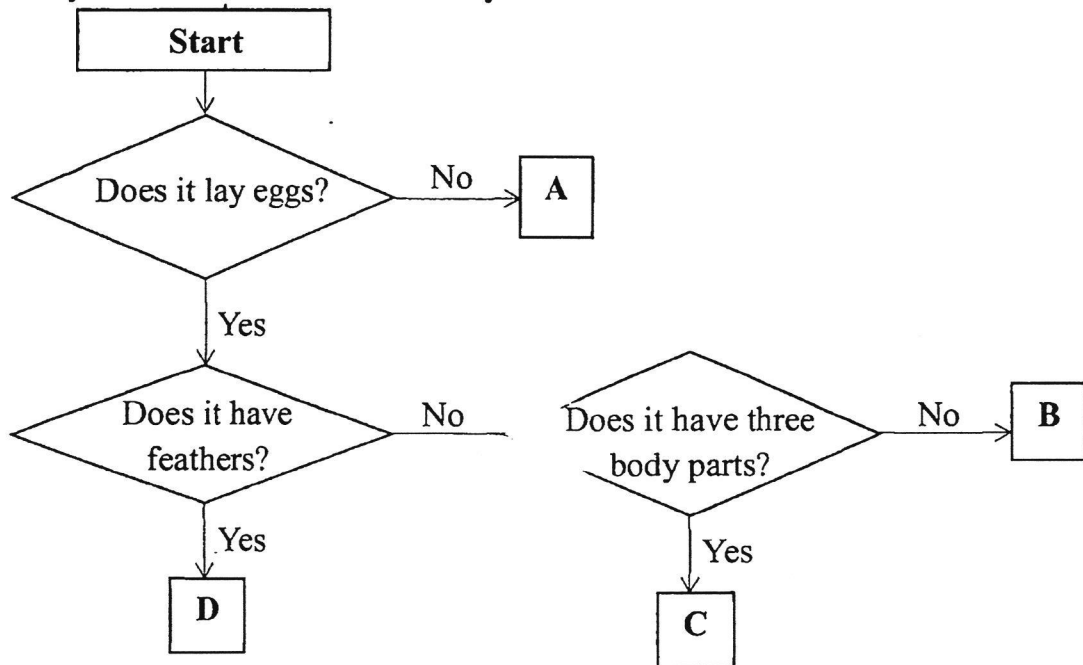
5. Jane found animal X in her garden and wanted to find out if it is an insect.

|          |                                       |
|----------|---------------------------------------|
| <b>A</b> | Count if animal X has 6 legs.         |
| <b>B</b> | Observe if animal X has wings.        |
| <b>C</b> | Measure the weight of animal X.       |
| <b>D</b> | Observe if animal X has 3 body parts. |

Which of the following observations will help her to find out if Animal X is an insect?

- (1) A and D only                      (2) B and C only  
(3) B and D only                      (4) A, B and C only

6. Study the flowchart below carefully.



Based on the flowchart above, which letter, A, B, C or D, best represents an amphibian?

- (1) A                                      (2) B  
(3) C                                      (4) D

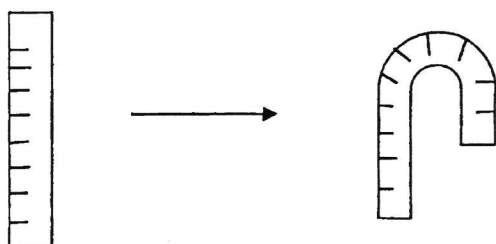
7. Benny observed the outer coverings of three animals, E, F and G, and recorded his observations in the table below.

| Animal | Outer Covering       |
|--------|----------------------|
| E      | Hair                 |
| F      | Moist skin           |
| G      | Dry skin with scales |

Based on the table above, which of the following sets correctly identifies the groups of animals?

|     | E          | F          | G        |
|-----|------------|------------|----------|
| (1) | Mammals    | Fish       | Reptiles |
| (2) | Amphibians | Reptiles   | Fish     |
| (3) | Mammals    | Amphibians | Reptiles |
| (4) | Amphibians | Fish       | Mammals  |

8. A ruler was bent as shown below.



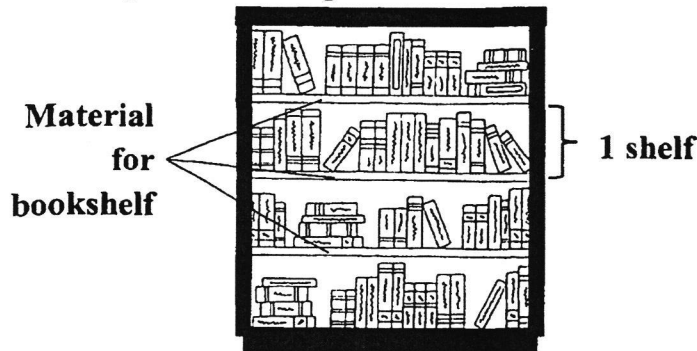
Which property of the material used to make the ruler allows it to be bent?

- (1) Strength
- (2) Flexibility
- (3) Ability to absorb water
- (4) Ability to allow light to pass through

9. The table below shows the properties of materials A, B, C and D.

| Property                    | A | B | C | D |
|-----------------------------|---|---|---|---|
| Can be bent easily          | × | ✓ | ✓ | × |
| Can hold up to 20-kg weight | ✓ | × | ✓ | × |

Megan placed all her books on the bookshelves as shown below. The books on each shelf weigh around 18kg.



Based on the diagram above, which of the following materials, A, B, C or D, was the material used to make the bookshelves?

- (1) A (2) B  
(3) C (4) D
10. Frank wanted to find out which type of plastic bag, E, F, G or H, would be the strongest. He placed identical 1-kg blocks into each plastic bag until the plastic bag broke. The table below records his observations.

| Plastic bag   | E | F  | G | H  |
|---|---|----|---|----|
| Number of 1-kg blocks that can be put into each bag before it broke | 6 | 12 | 3 | 15 |

Which of the following statements is correct?

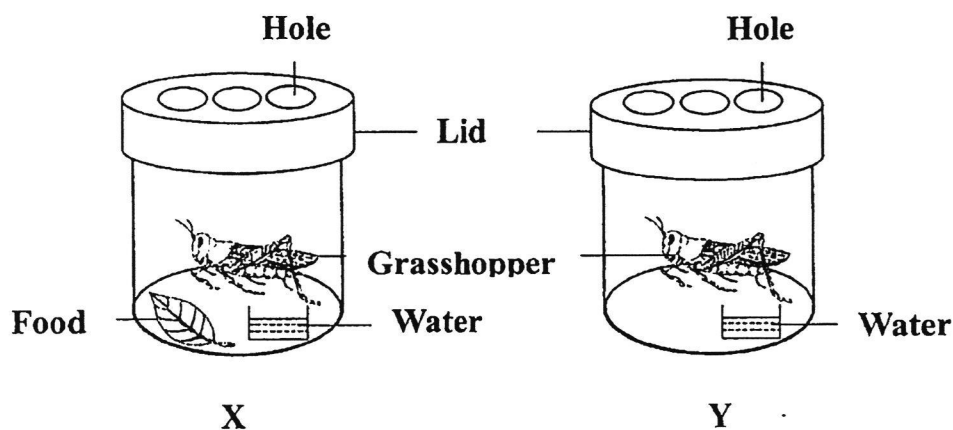
- (1) Paper bag F is the strongest.  
(2) Paper bag F is stronger than paper bag E.  
(3) Paper bag E is stronger than paper bag H.  
(4) Paper bag G will be able to hold 6kg of weight without breaking.

**Section B: (10 marks)**

**For questions 11 to 14, write your answers in this booklet.**

**The number of marks available is shown in brackets [ ] at the end of each question or part question.**

11. Two grasshoppers were placed in two containers, X and Y, as shown below. Food is put into container X every day.



- (a) After two weeks, the grasshopper in container Y died while the grasshopper in container X survived. Write down a reason why the grasshopper in container Y died. [1]

---

---

- (b) The holes on the lid of the containers allow air to enter the containers. Why is this necessary? [1]

---

---

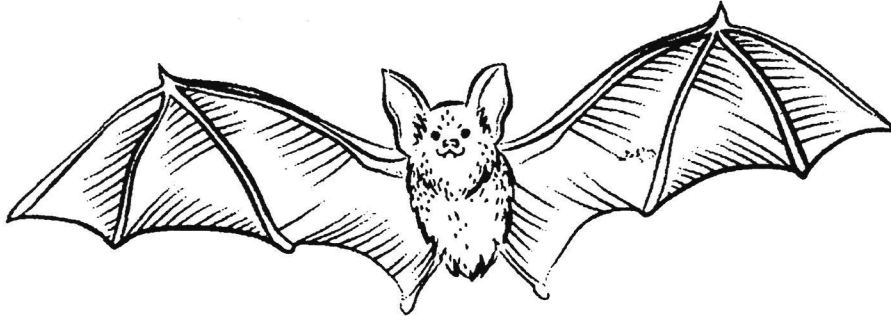
- (c) The length of the grasshopper in container X increased from 2cm to 3cm after two weeks. Which characteristics of living things does this show? [1]

---

---



12. A scientist discovered animal X in a forest. She observed the characteristics of the animal and recorded them in her notebook as shown below.



**Animal X**

- Has fur on its body
- Has wings and can fly
- Feeds its young with milk

- (a) Which group of animals does animal X belong to? [1]

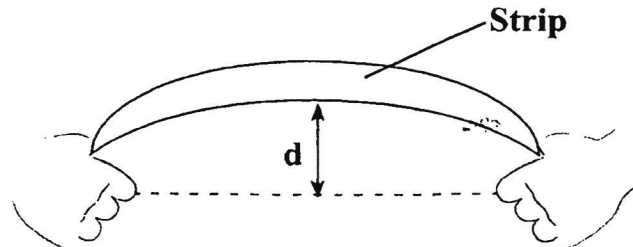
---

- (b) State another characteristic of the group of animals in which animal X belongs to. [1]

---

---

14. June conducted an experiment on four strips made of different materials, W, X, Y and Z, as shown below. He wanted to test their ability to bend before they break.



She bent each strip, one at a time, and her friend measured the maximum distance (d) that each material could bend before it broke. They recorded the results in the table as shown below.

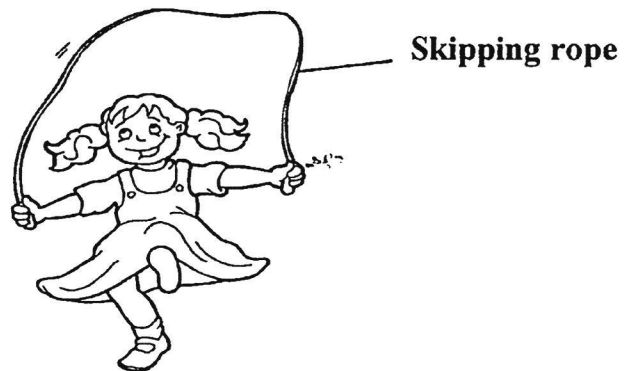
| Material | Maximum distance (d) each material could bend before breaking (cm) |
|----------|--|
| W        | 9  |
| X        | 4  |
| Y        | 15   |
| Z        | 1  |

- (a) Arrange the materials, W, X, Y and Z, based on their ability to bend before they break. [1]

Ability to bend the most  $\longrightarrow$  Ability to bend the least

|  |  |  |  |
|--|--|--|--|
|  |  |  |  |
|--|--|--|--|

(b) Study the diagram below.



Which material, W, X, Y or Z, is the most suitable to make a skipping rope?  
Explain your choice based on the data in the table on the previous page. [2]

---

---

---

**END OF PAPER**

SCHOOL : RULANG SCHOOL  
LEVEL : PRIMARY 3  
SUBJECT : SCIENCE  
TERM : 2024 WA1

CONTACT :

|      |   |
|------|---|
| Q1)  | 4   |
| Q2)  | 1   |
| Q3)  | 1   |
| Q4)  | 4   |
| Q5)  | 1   |
| Q6)  | 2   |
| Q7)  | 3   |
| Q8)  | 2   |
| Q9)  | 1   |
| Q10) | 2   |
| Q11) | <p>a) The grasshopper in container Y died as there was no food in container Y, so it will die earlier than container X. Living things need food to survive.</p> <p>b) This is necessary as if there is no air, the grasshopper will die. Living things need air to survive.</p> <p>c) This shows that Living things can grow.</p> |
| Q12) | <p>a) Animal X belongs to mammals.</p> <p>b) Mammals gives birth to young alive.</p>  |
| Q14) | <p>a) Y, W, X, Z</p> <p>b) Y is most suitable as it can bend the most before breaking A skipping rope needs to bend so that the person can jump.</p>  |

Visit  
**FREETESTPAPER.com**

for more papers