

**Henry Park Primary School**  
**Primary Four Science**  
**Weighted Assessment 1**

Name: \_\_\_\_\_ ( ) Class: 4 \_ Marks: \_\_\_\_\_ / 25

Parent's Signature: \_\_\_\_\_

---

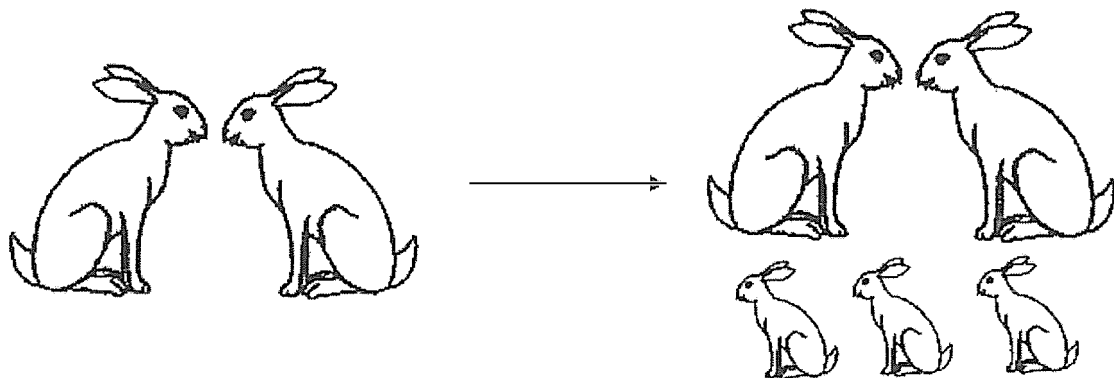
For questions 1 to 5, write your answers in the space provided.

Duration: 35 minutes

---

**Section A - Multiple Choice Questions (10 marks)**

1. Min Yee bought two adult rabbits. After one year, the two adult rabbits had three more young rabbits.

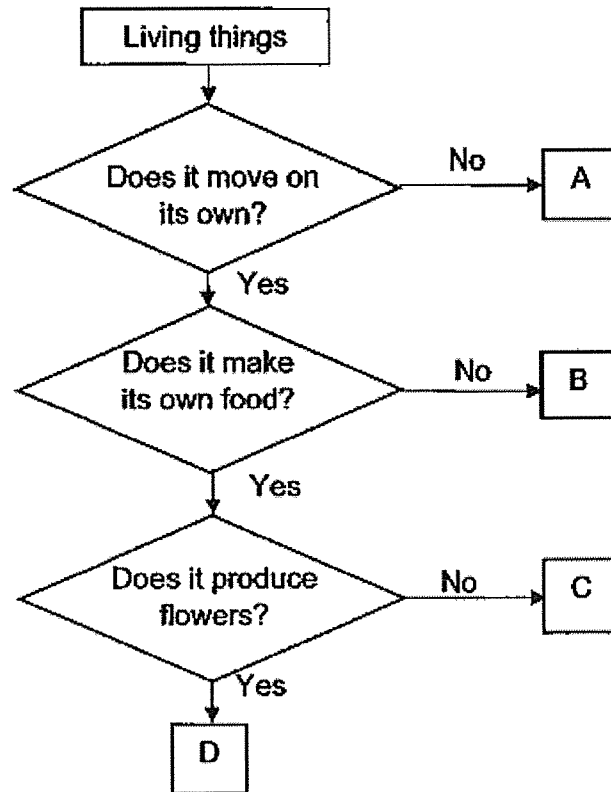


Which characteristic of living things does this show?

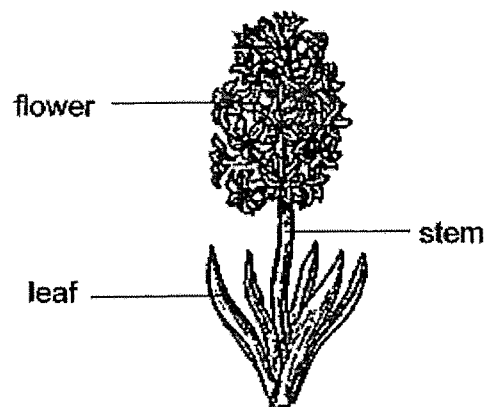
- (1) Living things die.
- (2) Living things move.
- (3) Living things reproduce.
- (4) Living things respond to changes.

( )

2. Study the flowchart below carefully.



The diagram below shows a plant.



Which letter in the above flowchart best represents the plant above?

(1) A

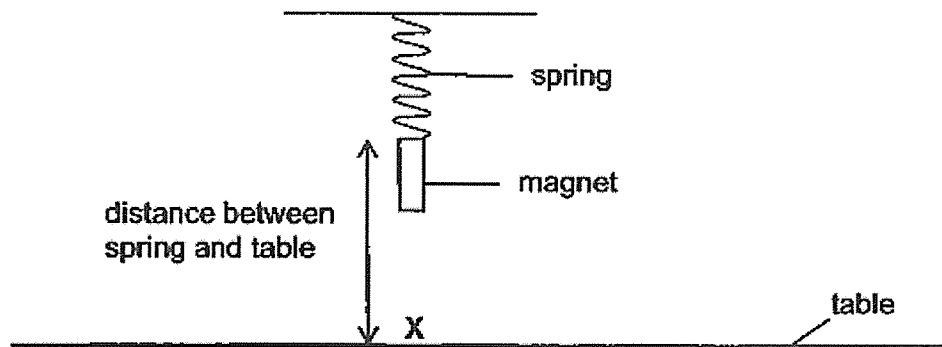
(2) B

(3) C

(4) D

(     )

3. Hannah conducted an experiment using the following set-up. The magnet was hung from the spring. After the spring had stopped moving, Hannah measured the distance between the spring and the table.



She repeated the experiment by placing different objects A, B and C at X. Her results are shown in the table below.

Object placed at X	Distance between spring and table (cm)
No object	10
A	15
B	10
C	5

Based on the results above, what could objects A, B and C be?

	A	B	C
(1)	copper coin	iron nail	magnet
(2)	copper coin	magnet	iron nail
(3)	iron nail	magnet	copper coin
(4)	magnet	copper coin	magnet

( )

4. The properties of four materials, D, E, F and G, are given in the table below.

Properties	D	E	F	G
waterproof	No	Yes	Yes	No
allows light to pass through	No	Yes	No	Yes
breaks easily	Yes	No	No	Yes

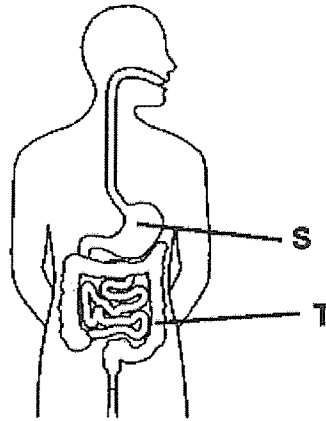
Which material is suitable to make part X of the spectacles shown below?



- (1) Material D
- (2) Material E
- (3) Material F
- (4) Material G

(     )

5. The diagram below shows the human digestive system.



Which of the following statement(s) about parts S and T is/are true?

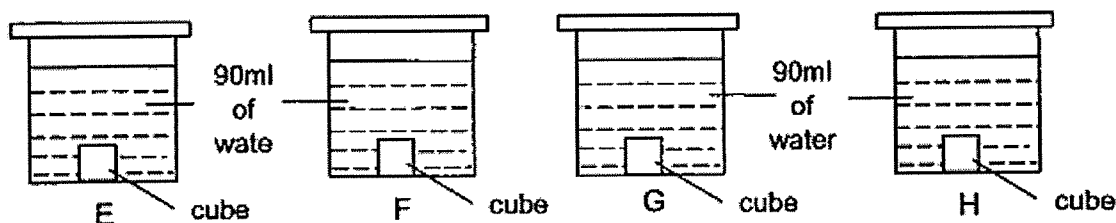
- A Digestion starts at part S and ends at part T.
  - B Part S has more digested food than part T.
  - C Both parts S and T contain digestive juices.
  - D Water is removed from the undigested food in Part T.
- (1) A only.
- (2) D only.
- (3) A and C only.
- (4) B and D only.

( )

### Section B – Short Answer Questions (6 marks)

6. Nelly wanted to find out whether four cubes, E, F, G and H, made of different materials could absorb water. All the cubes have the same volume.

She placed the cubes into four similar containers each filled with 90ml of water.



An hour later, she removed the cubes and recorded the amount of water left in the containers.

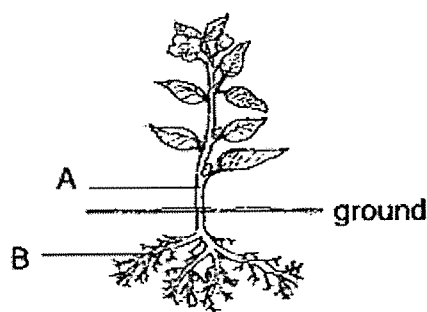
Material	E	F	G	H
Amount of water left in the container (ml)	90	30	70	0

Arrange the materials from the most absorbent to the least absorbent.

[2]

\_\_\_\_\_, \_\_\_\_\_, \_\_\_\_\_, \_\_\_\_\_  
 Most absorbent \_\_\_\_\_ → Least absorbent

7. The diagram below shows a plant.



- (a) Name the parts of the plant.

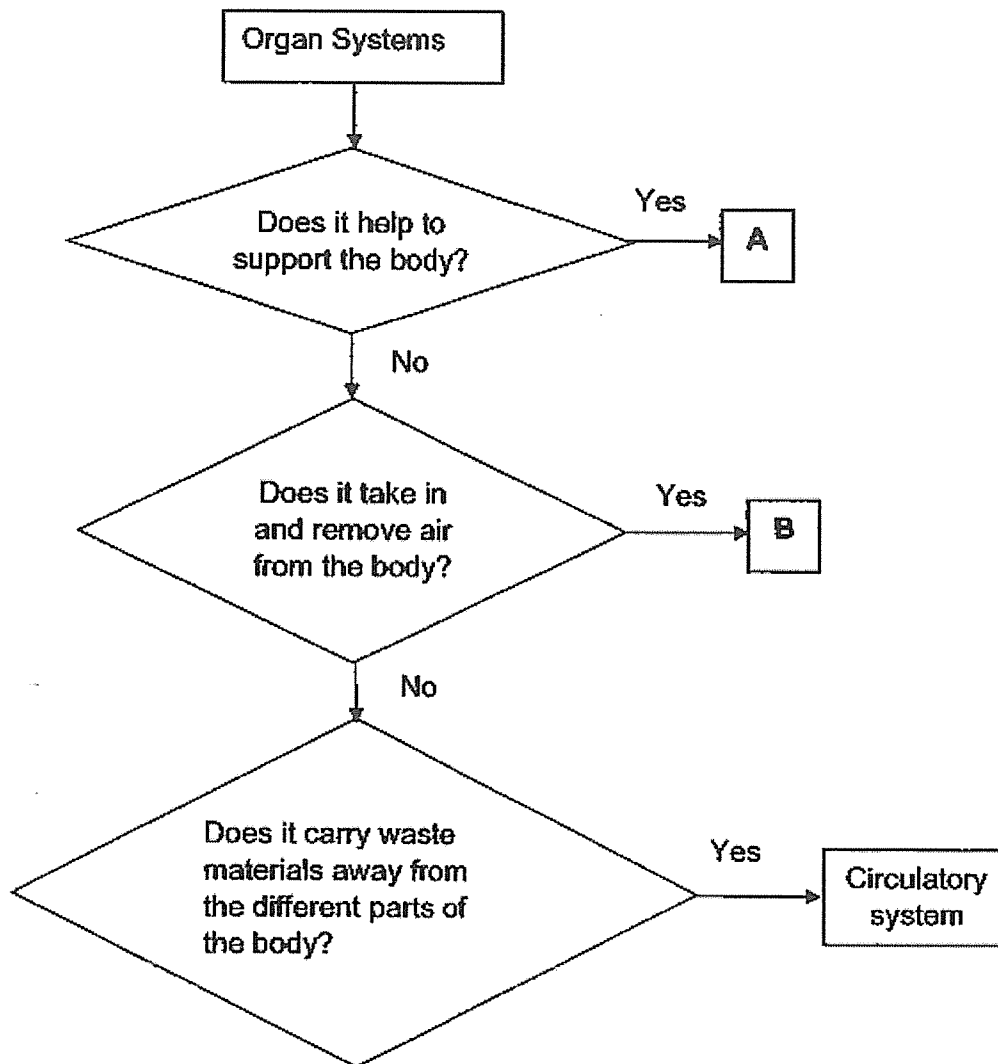
Part A is the \_\_\_\_\_ while part B is the \_\_\_\_\_.

[1]

- (b) State the function of part B.

[1]

8. Study the flowchart below carefully.



(a) Which organ systems do A and B represent?

[1]

A: \_\_\_\_\_ system

B: \_\_\_\_\_ system

(b) Which two organ systems work together to provide digested food to all parts of the body?

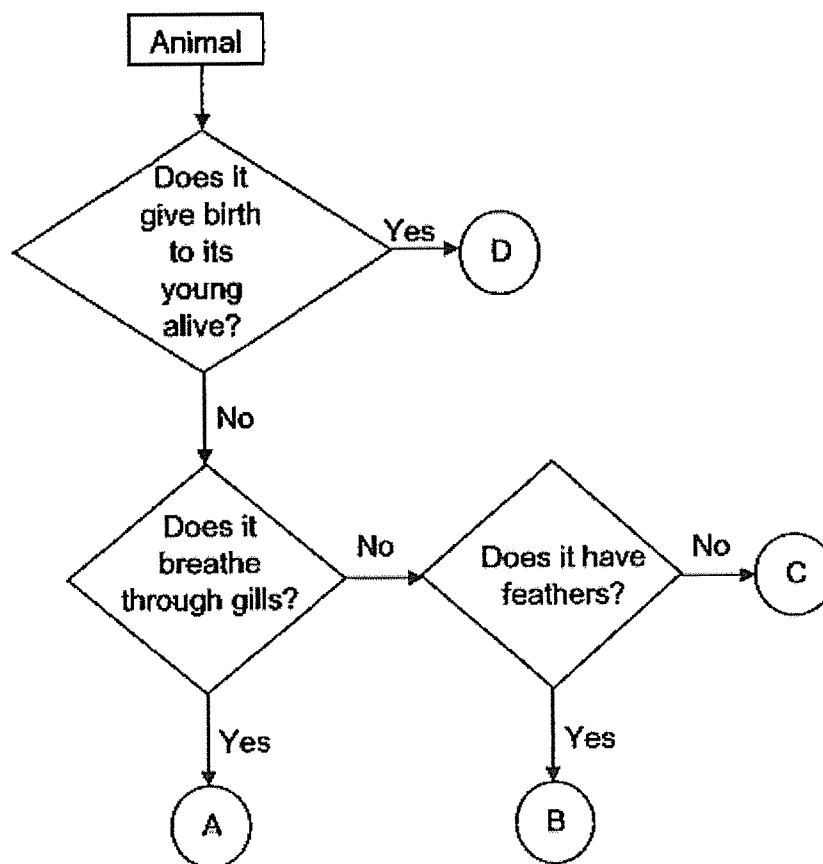
[1]

i) \_\_\_\_\_ system

ii) \_\_\_\_\_ system

**Section C – Open-ended Questions (9 marks)**

9. Study the flowchart below.



(a) Based on the flowchart above, state one similarity between animals A and B. [1]

---

(b) Based on the flowchart above, state one difference between animals A and C. [1]

---

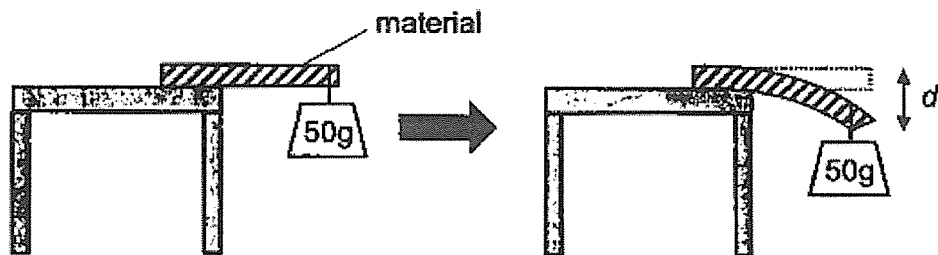
---

(c) Based on the flowchart above, which animal group does animal D belong to? [1]

---



10. Simon wanted to test a property of three materials, P, Q and R. He placed each material on the side of a table and hung a 50g weight on one end of the material. He measured the distance 'd' as shown in the diagram and recorded his observation in the table below.



Material	Distance 'd'
P	5
Q	13
R	0

- (a) State the property of the materials that Simon is trying to test. [1]

---

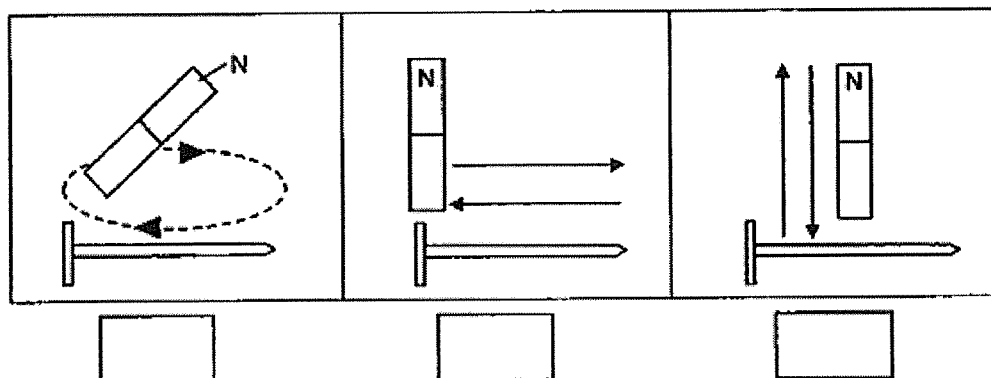
- (b) Which material, P, Q or R is most suitable for making a bookshelf? Explain your answer. [1]

---

---

11. Matthew wants to make an Iron nail into a magnet using the stroking method.

(a)(i) Tick (✓) the box that shows the correct way of using the stroking method to make the iron nail into a temporary magnet. [1]



(a)(ii) Describe how Matthew can increase the strength of the temporary magnet. [1]

---

(b) Matthew brought two magnets near to each other but the two magnets moved away from each other.



Is Y the North or South Pole? Explain your answer. [2]

---



---

End of Paper

**SCHOOL : HENRY PARK PRIMARY SCHOOL**

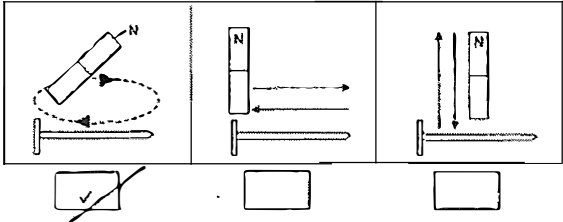
**LEVEL : PRIMARY 4**

**SUBJECT : SCIENCE**

**TERM : WA1 2023**

---

Q 1	Q2	Q3	Q4	Q5
3	4	4	2	4

Q6)	H , F , G , E
Q7)	a) Part A is the stem while part B is the root. b) It helps hold the plant firmly to the ground and get water from the soil.
Q8)	a) A: skeletal B: Respiratory b) i)Digestive ii)Circulatory
Q9)	a) They do not give birth to young alive. b) Animal A breathe through gills but animal C does not. c) Mammals.
Q10)	a) Flexibility b) Material R, material R is the least flexible so the books will not fall of the shelf.
Q11)	a)i) 

	<p><b>a)ii)Matthew can stroke the iron nail more times.</b></p> <p><b>b)Y is the north pole. Both like poles of the magnets are facing each other, so when they are brought together they will repel each other.</b></p>