

**PEI CHUN PUBLIC SCHOOL**

**PRIMARY 3**

**TERM 1 WEIGHTED ASSESSMENT**

**SCIENCE**

**Time: 30 min**

Name: \_\_\_\_\_ (     )

Class: Primary 3 / (     ) \_\_\_\_\_

Science Teacher: \_\_\_\_\_

Parent's Signature: \_\_\_\_\_

SECTION A	10
SECTION B	10
TOTAL	20

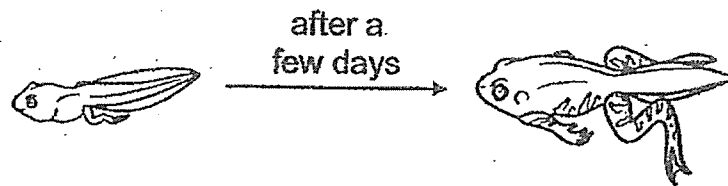
**INSTRUCTIONS TO CANDIDATES**

1. Do not turn over this page until you are told to do so.
2. Follow all instructions carefully.
3. Answer all questions.
4. Write your answers in this booklet.

**Section A (5 × 2 marks)**

For questions 1 to 5, choose the most suitable answer and write its number (1, 2, 3 or 4) in the brackets provided.

- 1 Raja found an animal in a pond. He observed how the animal changed over a few days.

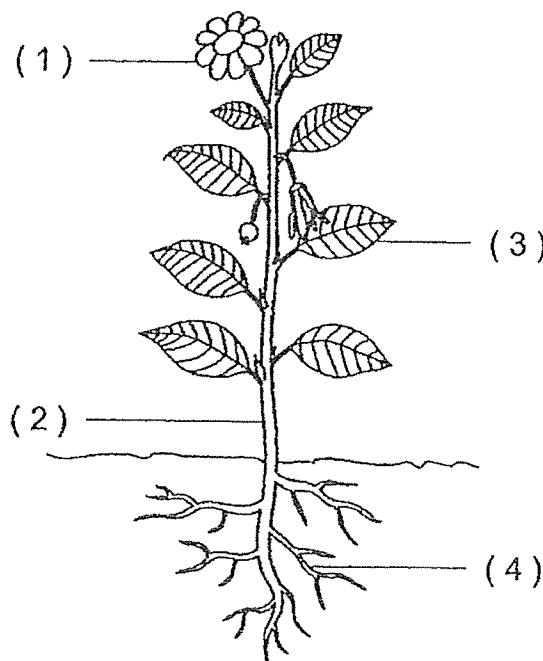


From his observation, Raja can conclude that the animal is a living thing because it can \_\_\_\_\_.

- (1) grow
- (2) move
- (3) respond
- (4) reproduce

(     )

- 2 The diagram below shows a plant.  
Which part, (1), (2), (3) or (4), is the roots?

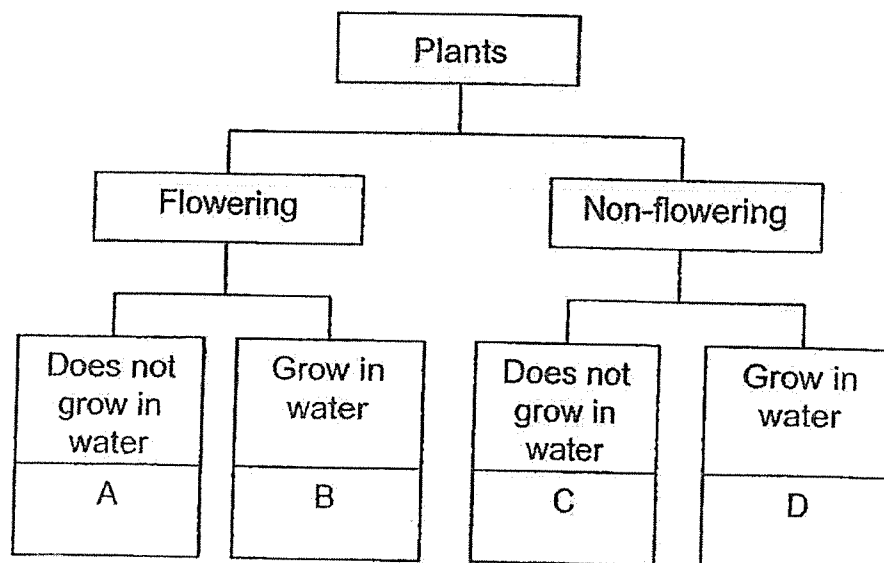


(     )

- 3 The table below gives some information on plant X, based on two characteristics. A tick (✓) shows that the plant has the characteristic.

Characteristics	Plant X
Produces flowers	✓
Grows on land	

From the information given, where does plant X belong in the following classification diagram?



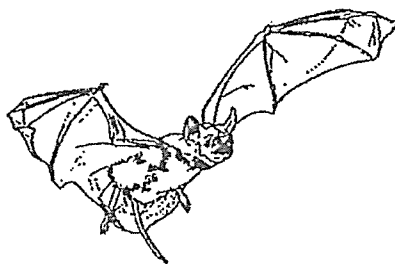
- (1) A
- (2) B
- (3) C
- (4) D

( )

- 4 The table below shows how some animals can be grouped.-

	Has hair	Does not have hair
Has wings	K	L
Does not have wings	M	N

The diagram below shows a mammal.

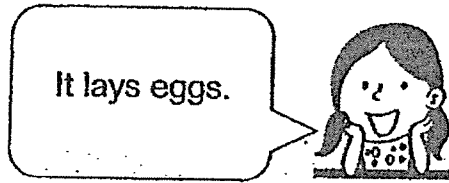


In which group of animals does this mammal belong?

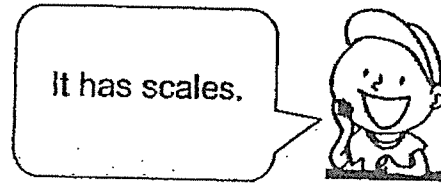
- (1) K
- (2) L
- (3) M
- (4) N

( )

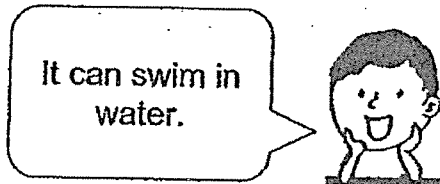
5 Four students made the following observations about an animal.



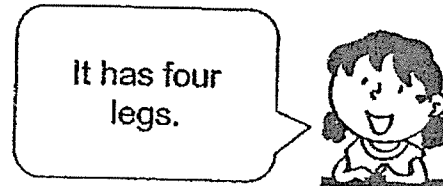
Anna



Bala



Carl



Dawn

Based on their observations, this animal can be classified as a/an \_\_\_\_\_.

- (1) fish
- (2) insect
- (3) reptile
- (4) amphibian

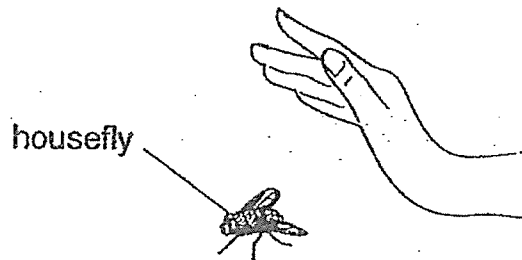
( )

End of Section A

**Section B (10 marks)**

For questions 6 to 9, write your answers in the spaces provided.

- 6 Aini saw a housefly resting on the table.

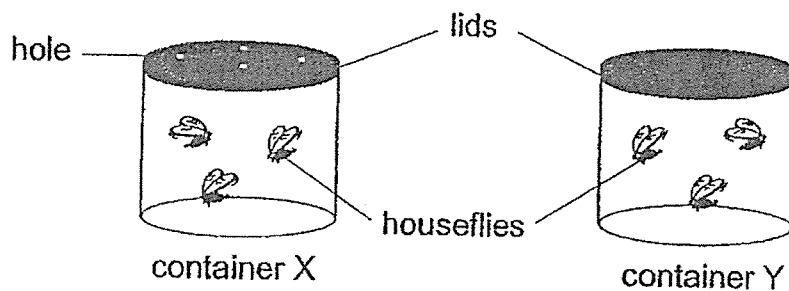


- (a) Aini moved her hand near the housefly and the housefly flew away. What characteristic of living things did the housefly show? [1]

---

---

- (b) Aini kept the same number of houseflies in two glass containers as shown below.

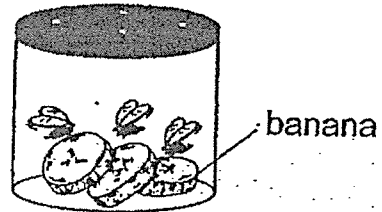


Explain why the houseflies in container X could stay alive longer than those in container Y. [1]

---

---

- (c) Aini added some pieces of banana into container X.







Explain how this would help the houseflies to stay alive. [1]

---

---

7 Joanne grouped some living things as shown in the table below.

Living Things	
K	L
 rabbit's foot fern	 dandelion
 water moss fern	 hibiscus

Choose the correct phrases from the box below to give suitable headings for K and L. [2]

Grow on land	Grow in water
Can produce fruits	Can make its own food
Cannot produce fruits	Cannot make its own food

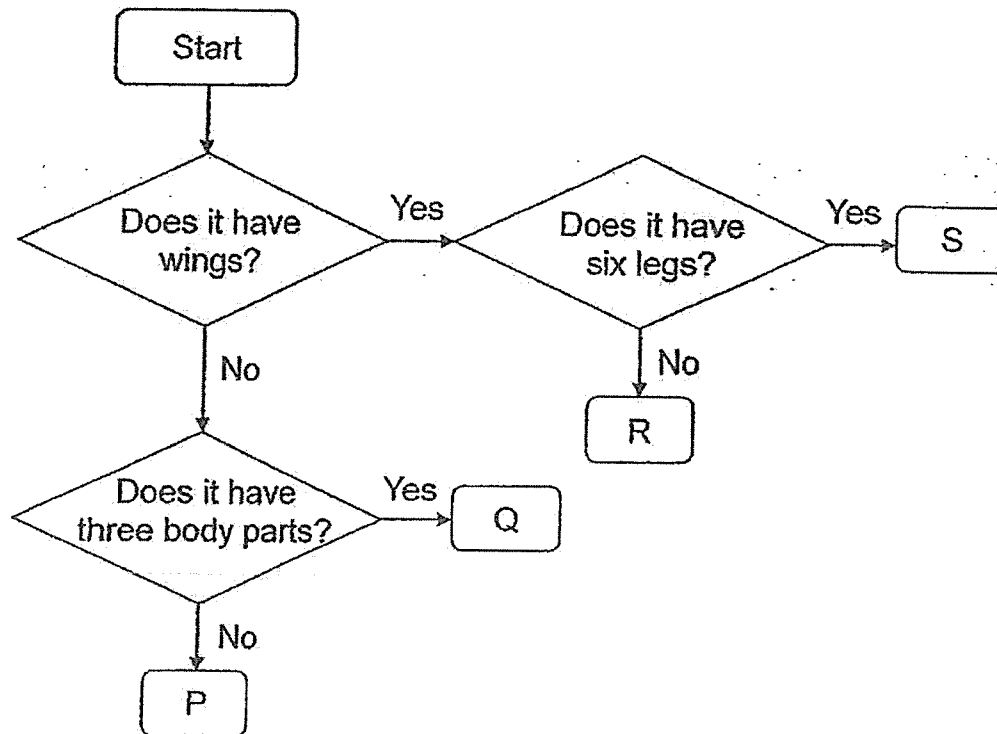
K: \_\_\_\_\_

L: \_\_\_\_\_

SCORE	
-------	--



- 8 Study the chart below. Letters P, Q, R and S represent four different animals.



Use the information in the chart to answer the following questions.

- (a) State a similarity between animals P and Q. [1]

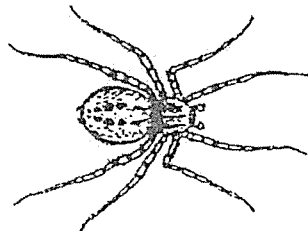
---

---

- (b) Which of these animals, P, Q, R or S, is/are insects? [1]

---

- (c) The diagram below shows an animal.



Match the animal to the correct letter (P, Q, R or S) in the chart. [1]

It is animal \_\_\_\_\_.

SCORE	
-------	--

- 9 Jim observed animal Z and concluded that it is a bird.



animal Z

- (a) Tick (✓) one of the following characteristics of animal Z that allowed Jim to conclude that it is a bird. [1]

☐

It can fly.

☐

It has wings.

☐

It has feathers.

- (b) State how animal Z reproduces. [1]

---

---

End of Section B

SCHOOL : PEI CHUN PUBLIC SCHOOL  
 LEVEL : PRIMARY 3  
 SUBJECT : SCIENCE  
 TERM : TERM 1 WA

### **SECTION A**

Q 1	Q2	Q3	Q4	Q5					
1	4	2	1	3					

### **SECTION B**

Q6)	(a) The housefly responds to changes around it. (b) The house flies in Container X had enough air to stay alive but the house flies in Container Y did not. (c) The house flies had food to stay alive.
Q7)	K : Cannot produce fruits  L : Can produce food
Q8)	(a) Both P and Q do not have wings (b) Q and S are insects (c) It is animal P
Q9)	(a) Tick " It has feathers" (b) Animal Z lay eggs.